

art SHOWCASE

Relevant Reading for the Artistic Mind.

Ann Arbor

SUMMER FESTIVAL

Michigan

**SHAKESPEARE
FESTIVAL**

Antiquarian

BOOK FAIR

The Earth

Friendly Art of

WENDEL HEERS

A Summer

CRAFT BREW ODYSSEY

+ Don't Miss Our
Culinary Marketplace,
Product Showcase,
Local Arts News
& Calendar of Events

**MICHIGAN
SUMMER
FAIRS &
FESTIVALS**



ann arbor
summer festival

LIVE. LIFE. OUT. LOUD.

The Ann Arbor Summer Festival is a three-week journey of amazing things. From outdoor entertainment to indoor performances, you can find something remarkable for everyone.

Find out more at www.annarborsummerfestival.org.

Chelsea Painters ART FAIR

June 5th & 6th, 2010

10 a.m. to 5 p.m. 775 S. Main (M-52)
Chelsea Community Hospital Campus
Chelsea, MI

Free Art Activities for Children by CCA

All Original Works of Fine Art

www.ChelseaPainters.com



Come shopping at
Ann Arbor's
most interesting store
Everything is on consignment...



The Treasure Mart
Ann Arbor's oldest consignment shop
734.662.9887 • www.treasuremart.com
529 DETROIT STREET • ANN ARBOR
Mon-Sat 9AM-5:30PM



WENDEL HEERS: "SITE AND SURROUND"
Outdoor Sculpture Exhibition / May 15 - June 19 / Ann Arbor, MI
Reception: May 15, 2-5pm on the grounds of the artist's residence
Visitors Welcome / River Gallery Fine Art, Exhibition Coordinator
734.433.0826 / www.chelsearivergallery.com

- 06 PUBLISHER'S LETTER
- 18 RESTAURANT FOCUS
Streetside Seafood
- 20 CULINARY
MARKETPLACE
- 21 PRODUCT
SHOWCASE
- 26 LOCAL ARTS NEWS
- 28 CALENDAR OF EVENTS

12 Ann Arbor SUMMER FESTIVAL

FAIRS & FESTIVALS

Back for its 27th year the Ann Arbor Summer Festival, a Tree Town tradition, again combines fresh family fun with magnificent musical entertainment from June 18-July 11.



Photo by Myra Klarman, myraklarman.com



14

Michigan SHAKESPEARE FESTIVAL

PERFORMANCE ART

The Michigan Shakespeare Festival enters its 16th season in mid-July with an abundance of frivolity, fun and fancy.



Photo by Amy Johnston

22

The Earth Friendly Art of WENDEL HEERS

VISUAL ART

Site and Surround, the exhibit of longtime University of Michigan scholar and sculptor, Wendel Heers, opens Saturday, May 15.



16

32nd Annual Ann Arbor ANTIQUARIAN BOOK FAIR

LITERARY ART

West Side Book Shop owner Jay Platt invites you to the 32nd Annual Ann Arbor Antiquarian Book Fair on Sunday, May 16 from 11am-5pm.

Photo by Amy Johnston



24

A Summer CRAFT BREW ODYSSEY

TRAVEL & CULTURE | CULINARY ART

Take your taste buds on a trip with photojournalist and self-proclaimed beer snob, Amy Johnston, to sample some of the region's best craft brews.

Photo by Amy Johnston



Photo by Myra Klarman, myraklarman.com

CONTENTS

08 MICHIGAN SUMMER FAIRS & FESTIVALS

On the Cover:

The Michigan Challenge Balloonfest happens in Howell from June 25-27, sponsored by the Howell Area Chamber of Commerce; www.michiganchallenge.com. Cover photo courtesy of the Michigan Challenge Balloonfest.



FAIRS & FESTIVALS

From balloons, beer, jazz and jet planes to melons and maritime crafts; from art and wine to birds, cherries and even Elvis, in Michigan there is a summer fair or festival for just about every interest under the sun.

Get Festive This Summer in the Big Mitten We Call Home

Summertime in Michigan means a lot of different things to different people. But invariably, everyone agrees that the summer leisure opportunities here are nearly endless. There's the golf, the boating, fishing and camping; the trips up north to Traverse City, Mackinac Island, Sault Ste. Marie and the rest of the U.P.; the festivities of Frankenmuth, the bed and breakfasts, the cottages and condos; the trips to the beach towns of Michigan's west coast, and jeep treks on the Silver Lake Sand Dunes. The list goes on and on.

But all things considered, Michigan's summer fairs and festivals are second to none, both in their variety and quality. This issue, then, is dedicated to the array of family-friendly, 'funtastic' fairs and festivals found across this big mitten of ours during the summer.

You'll find a listing of many such fairs and festivals starting on page 8. And while it's certainly not an all-inclusive list, we tried to provide a good representation in the space that we had, and we hope you'll take advantage of at least a few of these great Michigan summer fairs and festivals.



Among my favorites is the Ann Arbor Summer Festival, a three-week celebration of outdoor and indoor concerts, cinema, family activities, food and fun. The Top of the Park concerts and late-night movie presentations continue to hold a special place in my memories, as my sister used to bring my siblings and I during our formative years. Get all the goods on this year's event in the article on page 12.

This issue also presents articles on the Michigan Shakespeare Festival (pg. 14) the Antiquarian Book Fair (pg. 16), and features in our visual arts piece the outdoor sculpture of renowned Michigan artist Wendel Heers (pg. 22). Finally, we've thrown in a fun piece on a summer craft brew odyssey with our witty photojournalist, Amy Johnston (pg. 24).

We hope no matter what you do that you enjoy your Michigan summer to its fullest. I know I will.

Kindest regards,

Jonathan E. Himlin
Publisher

NOW BECOME A FAN OF ART SHOWCASE MAGAZINE ON FACEBOOK!

PUBLISHER

Jonathan E. Himlin

CONTACT

LionTreeCommunications@Gmail.com

CONTRIBUTING WRITERS

Elaine Perlin Crossley
Amy Johnston
Jeff Mortimer
Meagan Swoyer
Sandra Xenakis

PHOTOGRAPHY

Amy Johnston
Ximena Erickson
Paul James

ADVERTISING

734.904.5904
ads@ArtShowcaseMagazine.com

EVENT SUBMISSIONS

Calendar@ArtShowcaseMagazine.com

WEBSITE

www.ArtShowcaseMagazine.com

VISIT THE ASM BLOG

www.ArtShowcaseMagazine.com/news

Art Showcase Magazine is Southeastern Michigan's premier print resource for fine entertainment in the arts. Our mission is to cultivate among our readers enhanced support, awareness and accessibility to local high art and culture. We help our readers to maximize the enjoyment they find in the arts, and we assist them in pairing their lifestyle interests with local arts opportunities.


Opinions of Art Showcase contributing writers are not necessarily those of the publisher. Reproduction in whole or in part of any text, photographs or illustrations without written permission from the publisher is strictly prohibited.

ART SHOWCASE MAGAZINE is published by




Lion Tree Communications.
Printed in the USA.
©2010 Art Showcase Magazine.
All rights reserved.

PLEASE RECYCLE.




CHIHULY
SUMMER 2010

 **FREDERIK MEIJER**
Gardens & Sculpture Park

MeijerGardens.org
I-96 and East Beltline, Grand Rapids, MI


LEAD SPONSORS OF THE EXHIBITION
THE DANIEL AND PAMELLA DEVOS FOUNDATION
THE MEIJER FOUNDATION
STEELCASE INC.


Dale Chihuly, *Blue Moon* (detail), 2010.
Photo by Scott Mitchell Leen.



TRADITIONS TO CHERISH

Intricately carved orchid in a silver setting is handcrafted by skilled jewelry artisans in Bali. Suspended from a Figaro chain.



 **TEN THOUSAND VILLAGES.**
HARMONY. MADE BY HAND.™
A Fair Trade Retailer.

Orchid Pendant
Indonesia, \$98
Perfect Mother's Day Gift!

303 S. Main St., Ann Arbor
734-332-1270

www.annarbor.tenthousandvillages.com

Bring in this ad to SAVE 20% off any one regular priced item.
Offer valid at participating stores until 6/30/10. Not valid with other discounts or purchases of gift cards.

1510

Michigan Summer FAIRS & FESTIVALS



FESTIVALS

Mackinaw Maritime Festival | [May 7-8](#)

Mackinaw City

(231) 436-5580 / www.mackinawmaritimefestival.org

A two day celebration of the rich maritime history of the Mackinaw City area. Events include a memorial of the sinking of the SS Cedarville, blessing of the fleet, panel discussion with survivors of the shipwreck, boat trips to the wreck site, open houses at area lighthouses and museums, presentations on history and navigation, historical scavenger hunt, fish boil, and much more.

Winefest 2010 | [May 7-8, 7pm](#)

Ann Arbor, U of M North Campus Research Complex

www.annarborartcenter.org

50th Annual Morel Mushroom Festival | [May 13-16](#)

Boyne City, Veteran's Memorial Park

(231) 582-6222 | visit www.morelfest.com

West Michigan Birding Festival | [May 14-16](#)

Ludington

(231)843-4826 | visit www.ludingtoncvb.com

From balloons, beer, jazz and jet planes to melons and maritime crafts; from art and wine to birds, cherries and even Elvis, in Michigan there is a summer fair or festival for just about every interest under the sun. And while no one has enough free time to experience them all, here's a list of some of Michigan's best to provide a helping hand toward planning a few of your family outings this summer.

Ann Arbor Book Festival | [May 14-16](#)

Ann Arbor

(734) 369-3366 |

www.aabookfestival.org

Blossom Days | [May 15-16](#)

Traverse City

(231) 223-4110

World Expo of Beer 2010 | [May 21-22](#)

Frankenmuth, Heritage Park

www.frankenmuthfestivals.com

MI.Funk | [May 22](#)

Lansing, Old Town Lansing

(517) 862-5437 | www.mifunk.com



North American Indian Powwow

[May 22-23](#)

Howell, Brighton Recreation Area

(810) 229-8977

www.teachingourtraditions.com

The All Nations Veterans Council will be hosting a traditional Native American Indian Powwow. The event

will include; traditional native dance, food, and native made crafts. Event will be open to the public beginning at 10am on both days.

Great Lakes Kite Festival | [May 22-23](#)

Grand Haven, Grand Haven State Park

(800) 622-4655 | www.mackite.com

Memorial Art & Wine Festival | [May 29-30](#)

Berrien Springs, Lemon Creek Winery and Fruit Farm

(269) 471-1321

47th Annual Birmingham Village Fair | [June 3-6](#)

Birmingham

(248) 644-1700 | www.enjoybirmingham.com

Festival of the Arts | [June 4-6](#)

Grand Rapids

(616) 459-1300 | visit www.festivalgr.org



Bavarian Festival 2010
June 10-13
Frankenmuth, Heritage Park
(800) 386-8696 |

www.frankenmuthfestivals.com

Located in the Harvey Kern Pavilion in Heritage Park. Sing and dance to Bavarian music played by costumed German bands. Taste the hearty Bavarian foods, plump bratwurst, barbecued chicken and homemade pretzels.

Strawberry Festival - Hartford | June 11-12
Hartford
(269)621-2477

Ella Sharp Art & Wine Festival | June 12
Jackson, Ella Sharp Museum of Art & History
(517) 764-0679 | www.pioneerwinetrail.com

Michigan Pride Festival & Parade | June 11-13
Lansing
www.michiganpride.org

Canton Liberty Fest | June 18-19
Canton
(734) 394-5460 | www.cantonlibertyfest.com

Summer Solstice Jazz Festival | June 18-19
East Lansing
(517) 319-6927 | www.eljazzfest.com

Belleville National Strawberry Festival | June 18-20
Belleville
(313) 383-8920 | www.nationalstrawberryfest.com



River Days | June 18-21
Detroit River Front
(313) 566-8200 | www.riverdays.com

River Days, a free four-day festival presented by the Detroit RiverFront Conservancy, culminates with the exciting Target Fireworks celebration.



Photo by Myra Klarman, myrklarman.com

Ann Arbor Summer Festival | June 18-July 11
Ann Arbor
(734) 994-5999 | www.annarborsummerfestival.org

The Ann Arbor Summer Festival is an exhilarating celebration of performing arts, outdoor entertainment and community spirit. Each year, the three-week event offers dozens of performances, events, activities, exhibitions, parties and more, with eclectic music, dance, theater, film, visual arts and family fun. Celebrating its 27th season in 2010, the Festival has invigorated the cultural life of this community as a joyous down-town event for over two decades. It brings the world to Ann Arbor. See ad on page 2 and story on page 12.

Livonia Spree | June 22-27
Livonia
(734) 427-8190

Mt. Pleasant Summer Festival | June 23-27
Mount Pleasant
(989) 773-3378

St. Stanislaus Polish Festival | June 24-27
Bay City
(989) 893-1749 | www.ststanspolishfest.com

Muskegon Summer Celebration | June 24-July 4
(231) 722-6520 | www.summercelebration.com

Michigan Thumb Festival | June 25-27
Sandusky
(810) 648-4445



Michigan Challenge Balloonfest | June 25-27
Howell

(517) 546-3920 | www.michiganchallenge.com
Join us for the state championship of hot air ballooning, featuring 50 gorgeous balloons. It's a weekend full of high-flying fun for the whole family. Enjoy thrilling skydiving exhibitions, dog shows, kids' activities, classic car show, arts festival, musical and family entertainment and more. Don't miss our night shows - MediLodge Fireworks on Friday and the fabulous balloon glow on Saturday. See ad on page 13.

Fiesta Mexicana | June 25-27
Flint
(810) 787-5701 | www.fiestamexicana.catholicweb.com

Westland Summer Festival | June 30-July 4
Westland
(734) 335-7943

29th Annual Sault Tribe Summer Gathering and Pow Wow | July 1-4
Sault Sainte Marie, Kewadin Casino, Hotel and Convention Center
(906) 495-1450

National Cherry Festival | July 3-10
Traverse City
(800) 968-3380 | www.cherryfestival.org



Michigan Elvisfest | July 9-10
Ypsilanti, Riverside Park
(734) 480-3974 | www.mielvisfest.org

[more>>>](#)

SUMMER FAIRS & FESTIVALS

River Raisin Festival | July 9-11
Blissfield
(517) 467-5992 | www.blissfield.net

Tall Ship Celebration: Bay City | July 15-18
Bay City
(989) 225-7856 | www.tallshipcelebration.com



Michigan Shakespeare Festival | July 15-Aug 8
Jackson

The Michigan Shakespeare Festival has been presenting the timeless themes and glorious language of William Shakespeare since 1995, growing each year into a premier regional event that draws respected actors from across the nation, and satisfied audiences from throughout the Midwest. The 2010 season opens at 7:30 p.m. on July 15 in the Michael Baughman Theatre on the campus of Jackson Community College with a preview performance of *Romeo and Juliet* followed by a preview performance of *The Comedy of Errors* at 2 p.m. on July 17. For more information, call (517) 998-3673 or visit www.michiganshakespearefestival.com. See story on page 14 and ad on page 15.

The Saline Celtic Festival | July 16-17
Saline
www.salineceltic.org

Hot Air Jubilee 2010 | July 16-18
Jackson
(517) 782-1515 | www.hotairjubilee.com

Chelsea SummerFest | July 23-24
Chelsea
(734) 475-1145

**Michigan Brewers Guild
Summer Beer Festival | July 23-24**
Ypsilanti, Depot Town
(800) 888-9487

Traverse City Film Festival | July 27-August 1
Traverse City
(231) 392-1134 | www.traverscityfilmfest.org



Photo by David Rhem

Coast Guard Festival | July 30-August 8
Grand Haven

The Coast Guard Festival is a unique, premier ten day national military festival, whose purpose is to honor the men and women of the U.S. Coast Guard. Come and enjoy activities for the whole family with a community picnic, a huge arts & crafts show in Central Park, a midway, water ski show, sporting events and more.

**Sounds & Sights on Thursday Nights
July 17-August 26; plus July 30-31**
Chelsea
(734) 433-2787 | www.chelseafestivals.com

Riverfolk Music and Arts Festival | Aug 6-7
Manchester, Carr Park
(877) 748-3655 | www.riverfolkfestival.org

Kalamazoo Ribfest | August 5-7
Kalamazoo
(269) 388-2830 | www.ribfestkalamazoo.com

Sterlingfest | August 5-7
Sterling Heights
(586) 446-2489



Photo by John Diephouse

Lansing JazzFest | August 6-7
Lansing
(517) 371-4600 | www.jazzlansing.com
Entering its 16th year, the Lansing JazzFest is a two-day FREE music festival that brings national, regional and local acts to an audience of roughly 15,000 people from across Michigan and nearby states in the streets of Old Town, surrounded by the best of the Capital City's art galleries as well as unique retail stores and grand architecture.

Frankenmuth Historical Farm Fest | August 6-7
Frankenmuth, Grandpa Tiny's Farm
(989) 652-6613



Thunder Over Michigan | August 7-8
Ypsilanti, Detroit Willow Run Airport (YIP)
www.yankeeairmuseum.org

The Thunder over Michigan Air Show takes place at Willow Run Airport, located just outside Ypsilanti. It represents the largest gathering of WWII heavy bombers in the world. The show site is conveniently located within a short drive of Detroit and all of its suburbs.



**Frankenmuth Summer Music Fest
August 12-17**

Frankenmuth 1-800-FUN-FEST
Music by some of the nations finest polish-style and German, Slovenian and American-style bands.

Dexter Daze | August 13-14
Dexter
www.dexterdaze.org

Great Lakes Folk Festival | August 13-15
East Lansing, MSU Museum
(517) 432-GLFF | www.greatlakesfolkfest.net

Ypsilanti Heritage Festival | August 20-22
Ypsilanti
(734) 483-6071 | www.ypsilantiheritagefestival.com

Howell Melon Festival | August 20-22
Howell
(517) 545-4240 | howellmelonfestival.com

The Howell Jaycees present the annual Howell Jaycees Melon Festival. The event is located throughout the Historic Downtown Howell and features Michigan largest small town parade. See ad on page 13.

Michigan Renaissance Festival | Aug 21-Oct 3
Holly
(800) 601-4848 | www.michrenfest.com

FAIRS

Antiquarian Book Fair | **May 16** | 11-5

Ann Arbor, Michigan Student Union

(734) 995-1891 | jjplatt@provide.net | annarborbookfair.com

Nearly 40 book dealers from throughout the Midwest. Fine used, rare and out-of-print books, maps, postcards, photographs, and prints. See ad on page 17 and story on page 16.

Art Birmingham | **May 15-16** | Sat 10-6, Sun 10-5

www.theguild.org/art_birmingham

More than 160 juried artists will be featured on South Old Woodward between Maple Road and Daines Street in downtown Birmingham.

Fine Art at the Village | **May 22-23** | Sat 10-8, Sun 12-6

Rochester Hills | (248) 689-8734 | www.FineArtAtTheVillage.com

101 artists from across the country. The Village of Rochester Hills Shopping Center. NE corner of Walton and Adams.

East Lansing Art Festival | **May 22-23** | Sat 10-6, Sun 10-5

(517) 319-6804 | www.elartfest.com

Hundreds of artists from Michigan and beyond come to Downtown East Lansing to exhibit art of all kinds.

Art on the Grand | **June 5-6** | Sat 10-7, Sun 11-6

Farmington | (248) 473-1856

A juried fine arts fair located on Grand River in the middle of downtown Farmington. A unique urban fair with a small town charm.

Chelsea Painters Art Fair | **June 5-6** | Sat & Sun 10-5

Chelsea | 1-800-888-9487 | www.ChelseaPainters.com

Held on the grounds of Chelsea Community Hospital, 775 S. Main St., Chelsea, MI. Twenty-five award-winning artists will display and sell original fine art and cards in a variety of media. See ad on page 3.

Flint Art Fair | **June 12-13** | Sat 10-6, Sun 11-5

Flint | www.flintartfair.org

The Flint Art Fair is on the grounds of the Flint Institute of Arts. Admission: \$5 Adults, \$4 FIA members, \$3 Ages 13-18, senior citizens, & Friends of Modern Art members, and Children 12 & under are free.

Art in the Sun, Arts and Acts | **June 25-27** | Fri 1-7, Sat 10-7, Sun 11-5

Northville | (248) 349-7640 | www.northville.org

A brilliant display of art. Over 100 exhibitors from surrounding states take part in this annual festive juried art show in downtown Northville.

Plymouth Art in the Park | **July 9-11** | Fri 12-8, Sat 10-7, Sun 10-5

Plymouth | 734.454.1314 | www.artinthepark.com

Held every year in July, this three-day event assembles more than 400 artists from all over the country with nearly 200,000 attendees.

Ann Arbor Art Fairs | **July 21-24** | Wed-Fri 10-9, Sat 10-6

Ann Arbor | www.artfair.org | www.2statestreetartfair.com |

www.theguild.org | www.a2southu.com

A group of four award-winning, not-for-profit art fairs in downtown Ann Arbor. More than 500,000 visitors attend the Fairs each year.

Orchard Lake Fine Art Show | **July 30-August 1** |

West Bloomfield | 248.684.2613 | www.hotworks.org

Expect 175 fine artists from around the country, with live artist demonstrations, live entertainment, a youth art competition and kids' activities.

Summer Fine Art At the Village | **August 7-8** | Sat 10-8, Sun 12-6

Rochester Hills | (248) 689-8734 | www.FineArtAtTheVillage.com

101 artists from across the country. The Village of Rochester Hills Shopping Center. NE corner of Walton and Adams.

Introducing Northville's summer art extravaganza:



June 25-27, 2010

Experience over 75 artists, lively music, food, films, plays, kids activities and the ambiance of downtown Northville.

Special highlights include:



Northville's 22nd Annual Fine Arts Festival

brought to you by the Northville Art House

Fri. 1-7 pm, Sat. 10-7 pm, Sun. 11-5 pm



A Series of One Act Plays

brought to you by the Tipping Point Theater

Friday-Sunday, 8 pm

Northville Film Festival

Includes a full-length indie film and shorts

Genitti's Theater, Saturday, Doors open at 7 pm



For more information, contact the Northville Art House at 248-344-0497, visit our website at www.northvillearts.org or follow us on Facebook and Twitter.



Art on the Grand is Even Grander in 2010!



Downtown Farmington

June 5-6

Friday, June 4: Beer & Wine Tent Pre-Glow with live band 5-8 pm

Saturday: 10-7 pm Sunday: 11-6 pm

Art on the Grand is a collection of fine artists from around the country.

Enjoy a unique Art Show setting as we close Grand River and place artists throughout the newly streetscaped Downtown.

More to enjoy:

Wine & Beer Tent open until 8 pm Friday and 11pm Saturday

Live Blues, Jazz, and Motown

Hands on Art activities for families

Strolling Entertainment

Proudly presented by:
Farmington DDA and Farmington Hills Dept. of Special Services

Follow us on:



For more event details visit:
www.DowntownFarmington.org
ph.248-473-7276

Ann Arbor SUMMER FESTIVAL



Photo by Myra Klarman, myraklarman.com

By Jeff Mortimer

It wasn't quite a near-death experience, but it was close to a perfect storm. Pfizer's departure from Ann Arbor in 2008, followed closely by the national economic tailspin, dramatically shrank the Ann Arbor Summer Festival's corporate and government support, not to mention ticket sales, and it found itself deep in the hole last winter.

After 26 years of presenting both ticketed shows at venues like the Power Center and Hill Auditorium and an engaging mix of outdoor music, movies, food, beverages and bonhomie at the admission-free Top of the Park, the annual three-and-a-half-week Festival had earned the right to be called a tradition, and a beloved one at that. It would be hard, and sad, to imagine a summer in Tree Town without it.

Happily, when times were better, the Festival had amassed a rainy day fund of more than \$100,000, roughly the amount of its deficit. That money is gone now, but the Festival isn't. It will be back for its 27th year, June 18-July 11, which shows why saving for a rainy day is so prudent.

So is strategic planning, which the Festival's board and staff engaged in big-time about a year and a half ago, spawning many of the concepts used in retooling the event to adapt to the new normal: reducing the number of ticketed indoor

shows, going dark on Monday but opening Top of the Park an hour earlier on weekends, and ramping up efforts to build individual support.

"We created different scenarios and came up with plans for how we would respond to them," says Robb Woulfe, the Festival's executive director. "What if it rained every night? What if all corporate support went away? Coming out of a very difficult season, this became something of a road map for us to revisit to address some of the challenges. As a business, you're always looking to maximize what works and minimize what isn't successful, but this was all sort of forced to the top due to the financial situation we found ourselves in."

Keeping the Festival economically viable while preserving its tradition of inventive, diverse, high-quality programming necessitated a tricky balancing act. But the Festival also has a tradition of continually fine-tuning itself, adjusting and evolving to satisfy changing audience tastes. What began in 1984 as a series of mostly indoor concerts of mostly classical music, mostly in the Power Center with the Top of the Park almost an afterthought, has morphed over the years into a mostly outdoor, mostly uncategorizable event that is more truly festive than it ever was, or even aspired to be, in its early days.

"Last year, we produced well over 100 separate events or happenings," says Amy Nesbitt, general

manager of the Festival. They included master classes, a kids' zone with hands-on activities, a place for teens, a late-night DJ, and the outdoor movies, plus ticketed concerts at several venues other than the Power Center, including the Michigan Theater, Hill Auditorium, and the University of Michigan Museum of Art.

"There were activities for all demographics," she says. "It was almost like having micro-climates throughout the event."

The Festival has spread out temporally as well as geographically. A Power Center concert by acclaimed singer-songwriter Patty Griffin kicks off the Festival on June 17, the night before Top of the Park opens, and retro-modern vocal stylist Chris Isaak's performance at Hill Auditorium on July 30 will be the last of the season under the Festival's aegis, almost three weeks after TOP shuts down until next year.

"This gives people a greater amount of time to enjoy those events and not hit the paycheck quite so hard in one condensed chunk of time," says Nesbitt.

Big-name attractions during that chunk of time include Broadway legend Bernadette Peters on June 26, celebrated jazz crooner John Pizzarelli on June 30, and the ever-popular political satirists The Capitol Steps in their traditional pair of Fourth of July shows. All will perform at the Power Center.

On the more adventurous end of the spectrum, Cinematic Titanic—the original cast and creators of Mystery Science Theater 3000—will riff on some of the cheesiest movies ever made at the Michigan Theater in two shows on July 2, the edgy and hilarious Berlin rockers Die Roten Punkte do their almost indescribable thing at the U-M Museum of Art on July 10, and Parisian electro-swingers Caravan Palace have a date at Lydia Mendelssohn Theatre on July 3.

While there are fewer ticketed shows, their range is as astonishing as ever, and maybe more so. It's another example of doing more with less.

"We went from \$400,000 in artist fees to \$250,000," says Woulfe. "For a festival of this level, that's not much to work with." Besides doing fewer shows, he and his staff focused on presenting acts with either high revenue potential or low costs.

"We have some overhead for a fringe-type show at the U-M art museum, but it's not a high-risk endeavor," he explains. "On the other hand, a Diana Krall or a Willie Nelson, that's usually over \$100,000 just in the artist's fee, but we'll do well on that. It's the middle ground that can be really dicey, a jazz artist or pop artist in the \$30-50,000 range who does okay but not as well as we need them to do. The risk isn't booking Diana Krall or the crazy German show at the museum. The risk is the artists that have some name recognition but we're not sure where they are in their trajectory or what response they'll get in this market. We eliminated some of the riskier middle ground."

What they didn't eliminate was the take-a-chance spirit that has kept the Festival fresh.

"You curate a season that's a little bit of everything, and you hope that the community responds to it and tries something new," says Woulfe. "I cannot think of anything more dull than doing the same old same old year after year. Part of our responsibility is pushing that envelope, inviting new artists and taking people out of their comfort zone. That is what art does. Even though we're very much concert promoters, we're an arts organization."

The silver lining in the economic cloud is that the community has been stepping up to fill the void left by the corporations. The Festival's patrons are not only still willing to buy tickets for the outré, but are also opening their wallets and checkbooks to support the enterprise in general.

For example, while Top of the Park is admission-free, it certainly isn't cost-free, and the Festival began asking patrons for a suggested donation of \$3 ("Three to Keep it Free!" is the slogan) several years ago. Last summer, receipts from that effort almost tripled, from \$15,000 to \$40,000. The number of individual donors is also on the rise, which has not been the case in most other markets.

"That's been one of the saving graces in terms of why we're still here and still able to do what we're able to do," says Woulfe.

And they're planning to both stick around and stay light on their feet. "Who knows what the festival will look like in five years?" Woulfe wonders. "It would scare me to think we would be exactly the same."

For more information about this year's Ann Arbor Summer Festival including a schedule of events, visit www.annarborsummerfestival.org.

ASM



MICHIGAN MADE ARTS & CRAFTS FAIR

Visit the Michigan Made Arts & Crafts Fair, part of the 2010 Howell Melon Festival - **Downtown Howell August 20, 21, and 22.** The juried show will feature hand-made, made in Michigan arts and crafts, and will be located adjacent to the historic Livingston County Courthouse. Feature your hand-made specialty items to over 25,000 attendees and be part of a great Howell tradition.

For more information visit:
HowellMelonFestival.com



visit our website 16HandsGallery.com for details on our
Spring Sale @ Moonlight Madness
16 HANDS
 216 S Main, Ann Arbor, MI 734-761-1110

6TH ANNUAL CIRCLE OF ART

A Silent Art Auction to Benefit Food Gatherers!

Sunday, May 16th, 2010 - 12 to 5p.m.
 Hosted by Saline Picture Frame Co.
 7641 N. Ann Arbor St., Saline, MI 48176
 Check out the art at www.circle-of-art.net



TURNING ART INTO FOOD

The Michigan SHAKESPEARE FESTIVAL

The Michigan Shakespeare Festival enters its 16th season in mid-July with an abundance of frivolity, fun and fancy that promises to keep audiences glued to their seats from the opening line to the final curtain. The 2010 season runs for four weeks beginning July 15 through August 8.



In her first year as artistic director, Janice Blixt takes a bold, fresh approach to two of Shakespeare's most well-known and frequently performed plays, *Romeo and Juliet* and *The Comedy of Errors*. An accomplished Shakespearean actor, director and teacher of classical theatre, Blixt noted, "The best productions of Shakespeare are the ones that demand their audiences live the journey with them." With that in mind, theatergoers can expect a memorable ride at this summer's festival.

The 2010 season opens at 7:30 p.m. on July 15 in the Michael Baughman Theatre on the campus of Jackson Community College with a preview performance of *Romeo and Juliet*, followed by a preview performance of *The Comedy of Errors* at 2 p.m. on July 17.

"*Romeo and Juliet* has been produced continuously for 400 years because Shakespeare's characters speak to universal truths: love, hate, humiliation, exaltation, honor, betrayal, greed, generosity, failure and success," said Blixt, the play's director.

"There's also humor. We're taking a softer, gentler approach to *Romeo and Juliet*. The scenery and costumes are post-Edwardian 1910. The play is about young people falling in love and guys hanging out, and some of the typical things they do and say. I'm really excited as we're not altering much, yet we're presenting the show in a fresh way that will invigorate audiences and give them a new sense of appreciation for Shakespeare."

Audiences can expect the same high-energy performance and good time when *The Comedy of Errors* takes the stage under the direction of Kevin Theis, a professional actor, director and playwright. "With its brightly colored sets and cartoonish costumes, the production will be fast, funny and fun," Blixt said.

Two special features give audiences opportunities to ask questions and provide feedback. At Bard Talks, professors from area universities share Shakespeare history and highlights of his plays with audience members before designated Shakespeare performances. At Talk Backs, audience members meet with the play's directors and actors after designated performances to debrief and offer feedback.

Based on the Pulitzer Prize-winning play by Alfred Uhry, *Driving Miss Daisy* rounds out the season with Sunday matinees at 3 p.m. for three consecutive weeks beginning July 25. Most of the all-star cast from last season's award-winning professional theatre production in mid-Michigan will reprise their stellar performances at this year's Michigan Shakespeare Festival.

The festival features professional and experienced actors from throughout the United States, with a generous number from Southeast Michigan, including Washtenaw County. Many cast members also are successful producers, directors, stage managers and choreographers. Their broad-based knowledge of theatre arts enhances every production they touch.

New this year is the High School Monologue Contest held in May in which students in grades 9 through 12 can win cash prizes. Each participant must read a two-minute monologue of their choosing from a Shakespeare play. Theatre and media professionals will select state finalists, who will compete at the festival on July 31 for a grand prize of \$350.

Also, the Michigan Shakespeare Festival cast will be performing *Snow White and the Seven Dwarfs* throughout June at elementary schools, district libraries, recreation centers, and the University of Michigan's C.S. Mott Children's Hospital. The actors will engage the children in audience participation activities that promise to be entertaining and memorable. The program is designed for children ages four through seven, but those younger and older will enjoy this classic play.

The Michigan Shakespeare Festival is a non-profit professional theatre founded in 1995. Since its inception, the festival has entertained more than 40,000 people of all ages. In 2003, the festival's quality and reputation as a regional classical theatre earned it the designation as the Official Shakespeare Festival of the State of Michigan from Gov. Jennifer Granholm and the State Senate.

To learn more about The Michigan Shakespeare Festival or to reserve tickets, call (517) 998-3673 or visit www.michiganshakespearefestival.com.

ASM

SHAKESPEARE FESTIVAL SCHEDULE OF PRESENTATIONS

Romeo and Juliet, Thursday, July 15, 7:30 p.m. (preview)
 Romeo and Juliet, Friday, July 16, 7:30 p.m. (preview)
 The Comedy of Errors, Saturday, July 17, 2 p.m. (preview)
 Romeo and Juliet, Saturday, July 17, 7:30 p.m. (opening)
 The Comedy of Errors, Sunday, July 18, 4 p.m. (preview)

The Comedy of Errors, Thursday, July 22, 7:30 p.m.
 The Comedy of Errors, Friday, July 23, 7:30 p.m.
 The Comedy of Errors, Saturday, July 24, 2 p.m.
 Romeo and Juliet, Saturday, July 24, 7:30 p.m.
 Driving Miss Daisy, Sunday, July 25, 3 p.m.

The Comedy of Errors, Thursday, July 29, 7:30 p.m.
 Romeo and Juliet, Friday, July 30, 7:30 p.m.
 Romeo and Juliet, Saturday, July 31, 2 p.m.
 The Comedy of Errors, Saturday, July 31, 7:30 p.m.
 Driving Miss Daisy, Sunday, August 1, 3 p.m.

The Comedy of Errors, Friday, August 6, 7:30 p.m.
 The Comedy of Errors, Saturday, August 7, 2 p.m.
 Romeo and Juliet, Saturday, August 7, 7:30 p.m.
 Driving Miss Daisy, Sunday, August 8, 3 p.m.
 Romeo and Juliet, Sunday, August 8, 7:30 p.m.

Pure Shakespeare

NO PASSPORT REQUIRED

Enjoy professional theatre in an intimate setting, right here at home!

Michigan's official Shakespeare Festival celebrates its 16th season:

Romeo and Juliet
The Comedy of Errors
Driving Miss Daisy

July 15 – August 8, 2010

www.MichiganShakespeareFestival.com

(517) 998-3673

for dates, tickets, and special offers



People Dancing

Presents
A Gala Dance Concert
 with
Movement Artists' Guild
www.peopledancing.org

One Night Only
May 21, 2010
8 PM
 Campbell Center for the Arts
 Greenhills School
 850 Greenhills Way
 Ann Arbor MI 48105



**Ximena
 Erickson**
 Photography

www.ximenaerickson.com

Our Town

an American classic
 by Thornton Wilder

Directed by Guy Sanville

through
May 29

underwritten by
THE MOSAIC FOUNDATION
 (of R. & P. Heydon)



The Purple Rose Theatre Company
 Box Office: (734) 433-ROSE (7673)
 Buy online: www.purplerosetheatre.org



32nd Annual Ann Arbor ANTIQUARIAN BOOK FAIR

Photos by Amy Johnston

Jay Platt, owner of West Side Book Shop in Ann Arbor, organizes the Antiquarian Book Fair each year. This year's fair will be held Sunday, May 16th in the ballroom of the Michigan Student Union, 530 S. State Street, from 11:00am-5:00pm. Admission is \$5 to benefit the William L. Clements Library of the University of Michigan.

By Jonathan E. Himlin

On Sunday, May 16th, nearly 40 book dealers from Michigan and throughout the Midwest will set up in the ballroom of the Michigan Student Union for only six hours to offer fine used, rare and out-of-print books, maps, postcards, photographs, and prints for sale to attendees of the 32nd Annual Ann Arbor Antiquarian Book Fair.

A wide variety of books will be available at the fair including cookbooks, art books, long out-of-print children's books, first editions, early Americana, Michigan history, travel and exploration, as well as antique maps, vintage photographs and prints.

According to Jay Platt, event organizer and owner of West Side Book Shop in Ann Arbor, prices will range from a few dollars to thousands of dollars, depending on the item. "There will be something for every taste and pocketbook," Platt says.

And he should know. Platt has been in the book world for almost 40 years. His love affair with vintage books began in 1970 when a friend brought him to a Dauber & Pine book store on 4th Avenue in New York City. Just five years later he opened West Side Book Shop in Ann Arbor. "I enjoy what I do very much," Platt says with a grin. "Every day I see a book that I've never seen before."

The Ann Arbor Antiquarian Book Fair has long been a tradition among book lovers in Ann Arbor and the surrounding area. It calls attention to the fact that Ann Arbor is one of the most active book-buying markets in the country, and a destination stop for bibliophiles throughout the United States and Canada.

Platt, along with several other bookstore owners, began the Antiquarian Book Fair in the summer of 1976 in an attempt to sell books to members of the American Library Association, who had scheduled their Rare Book Conference in Ann Arbor that year.

"We decided a three-day fair would be adequate and secured a room in the Michigan League," recalls Platt. "In anticipation of a collegial event hobnobbing with the rare book librarians, a wine and cheese reception was planned for the opening night. Well, the librarians came, drank the wine, ate the cheese, bought few books, if any, and left. The next two days were spent in the hottest and most humid days of the summer with no air-conditioning staring at each others books. There was no fair in 1977."

But despite the Fair's inauspicious beginnings, Platt would continue it in the years to come, adapting to the changing times caused by the emergence of the digital age.

"I'm a firm believer that the book trade should be visible and tangible," Platt says. "Browsing through printed books, particularly rare and collectable books, gives you a different experience than you could ever get on the internet."

Personally, Platt favors books on Antarctica, as well as books on Michigan history by local authors. His shop carries many of these, but also specializes in a number of first edition copies. Among his most prized is a first edition of Nathaniel Hawthorne's *Scarlet Letter*, which retails for \$7,500. But the most valuable book Platt carries is a copy of *When We Were Very Young* by A.A. Milne. The book, which was published in 1924 and features the first appearance of the famous character Winnie-the-Pooh, was signed by the author and its renowned illustrator, E.H. Shepard. Its price is \$15,000.



West Side Book Shop owner Jay Platt organizes the Antiquarian Book Fair.

Platt expects between 450-600 attendees at this year's Antiquarian Book Fair, most of which live within 100 miles of Ann Arbor. But inevitably, collectors make the trip from cities like Chicago, Cleveland and Toronto. Book dealers are expected from across the Eastern part of the country—from Minneapolis and Chicago to Vermont and Massachusetts, and even Tennessee.

For more information contact Jay Platt at the West Side Book Shop, 113 W. Liberty, Ann Arbor by calling 734-995-1891, via email at jplatt@provide.net or visit www.annarborbookfair.com. **ASM**

Ann Arbor Book Festival May 14-15, 2010

The Ann Arbor Book Festival's mission is to promote reading, heighten awareness of literacy challenges, and showcase the rich culture of the written word in Michigan and beyond.

Friday, May 14 2010

- Literama! Share in an evening full of poetry and the presentation of the 2010 LILA Award.

Saturday, May 15 2010

- Come share a meal, meet, and chat with some of our Guest Authors at our Author Breakfast.
- Adding to the festivities is the Annual Symposium of the Fellowship of American Bibliophilic Societies.
- Join us for our annual Writer's Conference.
- The Author's Forum presents American Salvage, a conversation with Bonnie Jo Campbell & Lolita Hernandez.

For complete schedule information about this year's Ann Arbor Book Festival, please go to www.aabookfestival.org.

THIRTY SECOND ANNUAL
ANN ARBOR
ANTIQUARIAN
BOOK FAIR

Sunday, May 16, 11:00 - 5:00
Admission: \$5.00

MICHIGAN UNION
BALLROOM, 2ND FLOOR
530 S. STATE (S.STATE @ S. UNIVERSITY)

FIRST EDITIONS - RARE BOOKS
AMERICANA - FINE PRINTING
GOOD USED BOOKS IN ALL AREAS

FOR MORE INFORMATION CALL:
WEST SIDE BOOK SHOP (734) 995-1891
annarborbookfair.com

2010

SPONSORED BY THE ANN ARBOR
ANTIQUARIAN BOOKSELLERS ASSOCIATION
A BENEFIT FOR THE WILLIAM L. CLEMENTS LIBRARY

JEWELRY • CANDLES • BUTTONS • EPHEMERA

FOUND

Whimsical Art
Vintage Treasures
Fun Finds

407 N. FIFTH AVE. IN KERRYTOWN • ANN ARBOR, MI
734.302.3060 • www.FoundGallery.com

VINTAGE • ECO-FRIENDLY • REPURPOSED • RECYCLED • REKNIT

CARDS • GIFTS • FORK ART • HOME GOODS • FINDINGS • ARTSY DO-DADS

ARTISAN • HANDCRAFTED • FUNKY • LOCAL



*"We're a part of
people's daily lives."*

— Sharon Juergens,
Executive Chef

Birmingham's Streetside Seafood; A GREAT CATCH

Photos by Ximena Erickson

By Elaine Perlin Crossley

With its navy blue brick façade and trendy signage, Streetside Seafood has total curb appeal. But it's that certain glow from the outside looking in that cinches the desire to drift into this intimate neighborhood niche. Once inside, the energy is palpable as a chic copper-topped bar entices an urbane crowd to sip, sup and stay awhile.

An Eclectic Edge

After wending a pathway through the narrow bar, a relaxed 52-seat dining room awaits. One might wonder how a lively bar scene and serene eating space seamlessly co-exist. Well, this is just one of the eclectic features that make Streetside so unique. From its stylish, yet casual ambience to its delicate, yet piquant tastes, this eatery charms with an artful blend of contrasts.

In 1995, proprietor Bill Roberts had a wish to open a seafood saloon—with panache. It stands to reason that his own refined, easy-going demeanor is reflected in each of his up-market Oakland County restaurants: Streetside, the Beverly Hills Grill, and Royal Oak's Town Tavern.

Architect/designer Ron Rea, with his renowned intuition and vision, helped Roberts bring his aspirations to fruition. "Ron and I work well together," Roberts says. "He has a talent and feel for great design, knows the marketplace well, and has a sense for what makes people comfortable."

Other stylish Streetside design elements include Art Deco-style black and white checkered flooring, and whimsical bronze-toned fish wall hangings in the bar area. The restaurant appeals with wooden tables, rich leather upholstery, Old Chicago-style bare brick walls, and an illuminated gallery of sea-themed prints and photos.

Fruits of the Sea . . . and More

Streetside offers an array of fresh, seasonal seafood and other delicacies. Executive Chef Sharon Juergens uses vendors who procure only the best quality and value to pass on to patrons. She marvels, "It's amazing how quickly seafood is transported these days. Products are over-nighted to guarantee freshness."

Detroit's Eastern Market provides the daily produce, and Juergens, with a degree in culinary arts from Schoolcraft College, would have it no other way. She has special memories of gardening with her late father, a former Detroit firefighter, and is intent on using only top-quality ingredients in her recipes. She enthuses, "In spring and summer, I love using such items as heirloom tomatoes, ramps and morel mushrooms." Her chalk board consists of daily-changing ambrosial specials.

Among the starters, find delectable chowders and bisques, seared rare tuna (pictured at right), coconut shrimp, oysters Rockefeller, cornmeal-crusted lobster cakes and more. About her delectable bisques, Juergens reveals, "I start off with great ingredients, and add a goodly amount of sherry!" And, enjoy them with the house-finished warm parmesan-dusted bread.

Best sellers include lake perch, whitefish topped with jumbo lump crab, and pan-roasted Atlantic salmon, an earthy robust dish made with lentils, tomatoes, onions, and aged balsamic.

Juergens also does justice to bouillabaisse, cioppino and other seasonal favorites such as halibut cheeks. She says, "Seafood is so diverse and has many influences, from New England to Midwest to French to Mediterranean to Pan Asian." And, she and her sous chefs include all of these preparations in their repertoire.

Non-seafood eaters can enjoy parmesan-crusted chicken breast, pepper-crusted filet mignon with wild mushroom port wine demi glaze, or textural salads with or without chicken.

Tempting Touches

Roberts notes, "We find that simple white plates create a canvas for all the vibrant culinary colors." Juergens chimes in, "Such as dishes with saffron broth, roasted tomato coulis, and summer vegetables. We eat with our eyes, and the appetite is whetted by color, texture and balance."

"The myth behind pairing only white wine with seafood is gone," Roberts notes. "Our best selling wines are reds." Streetside offers many premier domestic and international wines and beers. Popular reds are Napa Cellars Cabernet Sauvignon and Bearboat Pinot Noir, and whites include a few Michigan varieties like Shady Lane Riesling. Martinis and mixed drinks round out the libation list.

Finish with such mouth-watering desserts as key lime pie, walnut bourbon pie (as featured in *Bon Appetit Magazine*), brandy-spiked chocolate cake, and original flavors of house-made ice cream.

Streetside enjoys a strong connection with its patrons. From managers to servers to bartenders, the entire staff helps to create a welcoming atmosphere. "We're a part of people's daily lives," Juergens says. Customers are encouraged to make special menu requests, and to offer suggestions from their own travels. Roberts concludes, "And even though we regularly seek new ideas and specials, the basics are always there—great food, a hospitable staff, and great customers." **ASM**



Streetside Seafood

273 Pierce Street
Birmingham, MI 48009
(AI fresco dining begins in May)
www.streetsideseafood.com | 248.645.9123

Over 200 Premium Loose Teas
Fabulous Gift Ideas

Exquisite Tea Accessories
Tea Tastings & Special Events

TeaHaus
Ann Arbor

Private Tea Parties and Custom Favors.
Enjoy a Cup, Hot or Iced. To Stay or to Go.

Online Shopping now available at www.TeaHaus-AnnArbor.com.
204 N. 4th Avenue, Ann Arbor | 734.622.0460

Ayses's CAFE
Turkish Dine-In / Take-Out / Catering

"Enjoy our freshly prepared traditional Turkish dishes."
- Ayse Uras

MOTHER'S DAY SPECIAL, May 9
FATHER'S DAY SPECIAL, June 20
see AysesCafe.com

1703 Plymouth Rd. • Ann Arbor, MI 48105
(734) 662-1711 • ayse@aysescafe.com
Lunch 11-2:00 M-F • Dinner 5-9:00 M-Sat

Hollander's Kitchen Store

Cooking Classes Every Wed & Sun

located upstairs in the Kerrytown Shops

Cuisinart Le Creuset KitchenAid
Rosle Emile Henry Viking Breville Wusthof

Hollander's 410 N 4th Ave Ann Arbor 734 741 7531 www.hollanders.com

THE SUNDAY
Artisan MARKET
ANN ARBOR, MI

Unique Local Art

Mark Schroll

Sundays April - December • 315 Detroit Street • Kerrytown
Free Parking • www.sundayartisanmarket.org

Discover great new culinary items and activities.



VITA-MIX BLENDERS

Vita-Mix Blenders, the new standard for high performance blending. Available at the Hollander's Kitchen Store, 410 N. Fourth Avenue at Kerrytown in Ann Arbor. \$499.95. [734.741.7531](tel:734.741.7531) | www.hollanders.com



SMOKED SALMON

Classic Highland, GravLax, Thai-spice, Miso/Mirin. Selected as the Best Smoked Salmon by The New York Times and national food magazines. Also available: trout, mackerel, duck breast. The Tracklements Smokery, 212 E. Kingsley St. between 4th and 5th in Kerrytown. [734-930-6642](tel:734.930.6642) | www.Tracklements.com



PORCELAIN TRAVEL MUGS

These are great new porcelain travel mugs with fun summery designs. Available at TeaHaus, 204 North 4th Avenue, Ann Arbor. \$11.99. [734.622.0460](tel:734.622.0460) | www.teahaus-annarbor.com

Fri., May 7, 6pm
Wine Fest 2010
Downtown Wine Crawl
Wine & food pairings at 5 Ann Arbor locations. \$40. Benefit for the Ann Arbor Art Center. www.winefest.org or call 734.994.8004

Sat., May 8, 1-3:30pm
Parent/Child
Mother's Day
Fruit Tart
Class Fee: \$60. Register online at AnnArborCooks.com or call 734.645.1030.

Sat., May 8, 7pm
Wine Fest 2010
Strolling supper, international wine tasting, live and silent auctions, and art making galore to benefit the Ann Arbor Art Center. www.winefest.org or call 734.994.8004

Sun., May 9, 1 & 4pm
Mother's Day Tea
with the Fairies
Crazy Wisdom Tea Room. 114 S. Main St. Ann Arbor. Reservations required. [734.665.2757](tel:734.665.2757) or www.crazywisdom.net.

Wed., May 12, 12-1pm
From Bean to Bar -
Making Chocolate
with Barbara Wilson.
Class Fee: \$15. Hollander's at Kerrytown Shops. [734-741-7531](tel:734.741.7531) or www.hollanders.com.

Sun., May 16, 2-3:30pm
Early Springtime
Supper with Eve
Aranoff.
Class Fee: \$25 Hollander's at Kerrytown Shops. [734-741-7531](tel:734.741.7531) or www.hollanders.com.

Thurs., May 20,
7-10pm
The French Country
Kitchen
Class Fee: \$60. Register online at AnnArborCooks.com or call 734.645.1030.

Sat., June 6, 11-5pm
Taste of Ann Arbor
This annual community event features local restaurants offering visitors bite size, and some not so bite size, tastes of what they do best. Tickets can be purchased at the event for \$.50 each. Downtown Ann Arbor. Mainstreetannarbor.org

Fri., June 11, 1-4pm
Scrumptious Scones &
Buttery Biscuits.
Class Fee: \$75 Zingerman's Bakehouse, 3711 Plaza Dr., Ann Arbor. [734.761.7255](tel:734.761.7255), www.bakewithzing.com.

Wed., June 16,
5:30-9:30pm
Savory Pies
Learn to make empanadas, knishes and U.P pasties. Class fee \$125. Zingerman's Bakehouse, 3711 Plaza Dr., Ann Arbor. [734.761.7255](tel:734.761.7255), www.bakewithzing.com.

Sat., June 13, 3-8pm
Grillin'
Food Gatherer's Annual Fundraiser. A picnic extravaganza with live music. Washtenaw Farm Council Grounds 5055 Ann Arbor-Saline Road, Ann Arbor. Tickets and info: www.foodgatherers.org.

Sun., June 20 thru
Fri. June 25
Ann Arbor
Restaurant Week
"One price dining for

one week". Details: www.annarborrestaurantweek.com.

Kids' Summer
Cooking Camps
Summer Camp I: Baking & Pastry (June 21-25)
Summer Camp II: International (July 12-16)
Summer Camp III: Bootcamp (July 19-23)
Summer Camp IV: Cooking Around the Clock (August 9-13)
Register online at AnnArborCooks.com or call 734.645.1030.

Wed. & Sat., 7am
Ann Arbor Farmers
Market
In historic Kerrytown at 315 Detroit St. Ann Arbor 734-794-6255 www.a2gov.org/market.

Tues., 2-6pm
Downtown Ypsilanti
Farmers' Market,
Every Tues. 2-6 p.m. in downtown Ypsilanti at the corner of Michigan Ave and Hamilton. Local fruits and vegetables, seedlings, bread, baked goods, jams, honey, cheeses, meats, flowers and plants. www.growinghope.net/programs/market

Sat., 8am-1pm
Depot Town
Farmer's Market
(at the Freighthouse in Historic Depot Town) Email: ypsidepotfarmersmarket@yahoo.com.

Check out these unique, locally-available items.

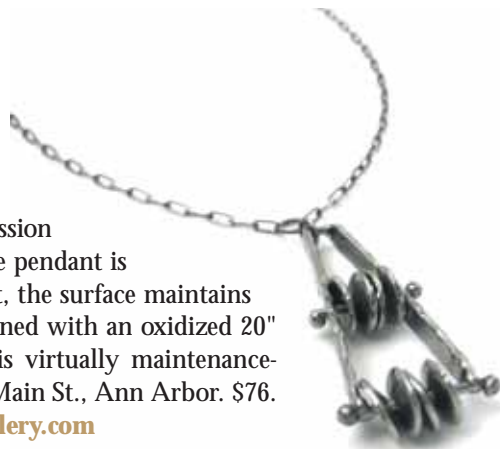


NECKTIE PURSES

Flirty purses crafted from vintage neckties by Ann Arbor artist Celibeth Donnelly. Available at FOUND, 407 N. 5th Ave. at Kerrytown, Ann Arbor. \$45-\$70. [734.302.3060 | www.foundgallery.com](http://www.foundgallery.com)

THE ABACUS NECKLACE BY SASHA CZAR

Sahsa the Czar is the creative expression of John & Heather Zondervan. The pendant is stainless steel. Well worth the effort, the surface maintains a wonderful darkened tone. Combined with an oxidized 20" sterling silver chain, this jewelry is virtually maintenance-free. Available at 16 Hands, 216 S. Main St., Ann Arbor. \$76. [734.761.1110 | www.16HandsGallery.com](http://www.16HandsGallery.com)



ANTIQUE GERMAN BEER BARREL
Antique German Beer Barrel Vessel. Find this and other great vintage pieces, plus fun spring gardening and patio items at The Treasure Mart! 529 Detroit St. at Kerrytown in Ann Arbor. [734.662.9887 | www.treasuremart.com](http://www.treasuremart.com)



SEATED DREAMER

Seated dreamer is lost in contemplation. This sculpture measures 13Wx15H. Classic design, smooth lines and satiny finish make this handcrafted sculpture special. Hand carving is done by artisans in the community of Tabaka in western Kenya, the location where this kisii soapstone is mined. Kisii soapstone is found only in Kenya. Made in Kenya by- Undugu Society of Kenya. Available at Ten Thousand Villages, 303 S. Main St., Ann Arbor. \$185. [734.332.1270 | www.annarbor.tenthousandvillages.com](http://www.annarbor.tenthousandvillages.com)

A Summer CRAFT BREW ODYSSEY

Story and Photos by Amy Johnston

Have you ever stood before the beer cooler, wondering which colorfully labeled set of bottles to invite home? I have. I'd tried all the mainstream lagers and big-name ales and now craved something that would touse the status quo and offer my palate a serving of a more vibrant world. After careful familiarization with local and regional craft beers, I discovered that I like what I like, but not necessarily why. To identify what it is that makes my favorite craft beers worthy of a beer connoisseur's attention, I decided to embark on an adventure to several of the very sources of barley goodness that grace our Ann Arbor area coolers and pubs.



The brew house at Great Lakes Brewing Company.

Great Lakes Brewing Company

My tour of Great Lakes Brewing Company in Cleveland, Ohio, established by brothers Patrick and Daniel Conway, begins in the tap room where famous Prohibition Agent Eliot Ness's bullet hole remains immortalized over the mahogany bar. Gracious hosts Molly Rothgery and Terence Ryan escort me across the parking lot where the GLBC's vegetable-oil-powered shuttle bus, known as The Fatty Wagon, awaits its next assignment. We amble into the brew house and tank farm, spotless leviathan reservoirs fermenting future Dortmund Gold Lager, Burning River Pale Ale, Eliot Ness Amber Lager, Commodore Perry IPA and Edmund Fitzgerald Porter. Along the way I learn that attention to detail in all aspects of the brewing process, restaurant and business strategies—from using highest quality ingredients and rigorous brewing standards, to employing spent grain to fertilize GLBC's organic Pint Size Farm, to how each beer is christened— influences every subtle nuance of each brew. When I sip the Edmund Fitzgerald, for instance, the rich,



round tones tell the story of GLBC's commitment to quality and circular cycle of sustainability.

Back in the taproom, Brewer Luke Purcell joins Molly and me for an indulgent beer tasting. After I sip from eight different glasses of lagers, ales and specialty beers, Luke produces a much-coveted bottle of Barrel Aged Black Out Stout, a Russian Imperial Stout conditioned in oak casks, in small batches. Like other GLBC brews, this one can't be found at Ashley's Pub or Sidetrack Bar and Grill—you have to visit Cleveland to get it! Passersby smile knowingly. After a single taste, I agree with Molly's sentiment: "It tastes like liquid commotion." The evening progresses with camaraderie and explanations about what makes an IPA taste "hoppy" or why Porter tastes chocolaty. The evening concludes with a cheery send-off, a gift of favorite dark beers and even a follow-up phone call to make sure I made it home alright. It's easy to understand why GLBC beers earn continuous awards.

Dark Horse Brewing Company

If you've ever sought to discover the meaning of laid back, just drive an hour east of Ann Arbor to Marshall, Michigan's Dark Horse Brewing Company. Situated in a town of 7,450, Dark Horse gives the feeling of vacationing in a tiny biker village up north somewhere. When I enter the cozy family-friendly tap room, fellow customers nod in my direction as though previously acquainted. The ceiling is covered end-to-end in patron-owned ceramic mugs crafted by Dalman Wood Fired Pottery of Marquette, testimony to the dedication of the Dark Horse regulars. Out back, visitors can listen, intimately, to live music or play a game of pounding substantial nails into a giant tree stump in as few strikes as possible. (I once played against two blacksmiths. You can guess who didn't win.)

I order Smoked Stout and Johnny Boy's Spicy Bread. The beer arrives almost immediately, and I drink the smooth, peaty liquid slowly, knowing Johnny Boy may take a while, as do other menu items, including the dazzling pizza. Dark Horse Owner Aaron Morse is out on errands, so Taproom General Manager Travis Glen entertains by giving meandering answers to questions like "What sorts of beer do you like besides the ones here?" It's more like hanging out—casual in the extreme, as a matter of fact—than anything else. While Johnny Boy bakes, Travis obliges to take me on a tour through the brewery. The brewers behind the scenes are... you guessed it: laid back. Though they are in constant motion whipping up perennial favorites, like Scotty Karate Scotch Ale,



Patron-owned ceramic mugs hang from the ceiling in the tap room at Dark Horse Brewing Company.

Raspberry Ale or Plead The Fifth Imperial Stout, they appear care-free and relaxed, just like the mellow brew I imbibe.

By the time the cheese-and-jalapeno-covered Johnny Boy bread arrives, I feel peaceful and relaxed. Between the atmosphere, beer, food and company, the day looks good. If ever you feel would like a violin string or need a place to make amends, Dark Horse Brewing Company offers a next-door decompression oasis. If you doubt me, just glance up at the ceiling there. The mugs agree.



Dave Engbers

Founders Brewing Company

Fitting the words “classy” and “sassy” in the same sentence isn’t difficult when discussing Founders Brewing Company or their creations. Take, for example, Dirty Bastard Scotch-Style Ale. Founders calls it “so good it’s almost wrong.”

I know this firsthand. But even armed with prior knowledge of Founders brews purchased from Plum Market, I am unprepared for the deluge of colorful draught provided by the illustrious and saucy Vice President and Director of Marketing Dave Engbers. For the first course, Dave orders beers lighter on the spectrum: lagers, pale ales and India pale ales. Each one plays a little song on my tongue, increasing in hop taste and boldness as the tasting progresses. For the second course, I sample darker porters, cask-conditioned ales and stouts, like Breakfast Stout and Backwoods Bastard. I think I’ve tasted everything—but no.

Add zany, ingenious and majestic to the Founder’s adjective lexicon, because the final two flavors I sample surely must come straight from the Big Rock Candy Mountain. Spite is a magical ale bewitched with habanero peppers. I’m surprised it doesn’t glow with bioluminescence. Dave says, “Beer is an emotional drink.” Does dumbfounded count? After I recover, I try the ever-popular cave-aged Kentucky Breakfast Stout, grateful that this particular creation CAN be procured locally, unlike many other Founders Brewing delights, which can only be had in their Grand Rapids tap room. If you can’t make it to Founders Brewing Company, though, many of its finely crafted brainchildren have a spot among other beer greats in pubs and coolers in the Ann Arbor area.

The Bottom Line

After long hours on the road, I’m convinced that good beer is not good just because of its flavor, but because it is imbued with the personalities of those who brew it, their business models, their idiosyncrasies. Great Lakes is a loving mother, full of joy, wealth, detail and nurturing. Dark Horse provides cozy reprieve from a taught, frazzled mindset and a place to make instant friends with the folks at the next table. Founders is quirky, refined, artsy and playful, and its quality, like a fine sculpture, can be measured from every angle, especially from the bottom of the glass, something you’re bound to view frequently if you sample a six pack. If you’ve tried beer from these three brewing companies, you have some idea of what I’m talking about. You’ll have an even better idea if you go on your own beer odyssey. Why wait? **ASM**

Ann Arbor’s Newest Brewery to Open in June

Of the hats E.T. Crowe wears—real estate agent, blogger, novelist, mother, wife—currently her most imposing head gear is that of Co-Owner and Marketing Director of Wolverine State Brewing Company. Now the taproom looks like a sleeping hideaway behind Great Lakes Cycling on Stadium Boulevard, but by the time the University of Michigan football team faces Michigan State in the teams’ first 2010-11 home match-up on October 9th, WSBC will transform into a raucous hub of lager aficionados and football fans, as Owners Matt Roy, Trevor Thrall and E.T. throw a giant blow-out party. Opening late June at 2019 W. Stadium Blvd. in Ann Arbor, Wolverine State Brewing Co. will brew and serve their famous Wolverine Beer, Michigan’s Premium Lager, and snacks. With the help of E.T.’s indomitable will and witty, must-read blog, A2beerwench.com, and Master Brewer Oliver Roberts’ top-notch beer batches, it won’t be long until visiting sports fans are crying in their very own “appropriately named delicious ale,” crafted especially for them by Oliver. www.wolverinebeer.com.

Great Lakes Brewing Company

2516 Market Avenue
Cleveland, OH 44113
(216) 771-4404 | www.greatlakesbrewing.com

Dark Horse Brewing Company

511 South Kalamazoo Avenue
Marshall, MI 49068
(269) 781-9940 | www.darkhorsebrewery.com

Founders Brewing Company

235 Grandville Avenue Southwest
Grand Rapids, MI 49503
(616) 776-1195 | www.foundersbrewing.com

The Earth Friendly Art of WENDEL HEERS

Photos by Amy Johnston



By Sandra Xenakis

When you first meet sculptor Wendel Heers, you can see that he's a scholar and a gentleman. After talking to him for awhile, you realize he's also a master recycler. Heers makes a point of using found objects in his stone and metal sculptures.

The public will have the rare opportunity to see how his work relates to the natural environment on Saturday, May 15, the opening day of "Site and Surround," a one-time, outdoor exhibit on the grounds of his west Ann Arbor home. Twelve to fifteen stone, metal and wood sculptures, ranging in height from several inches to forty feet, will be available for viewing and sale.

These are not your ordinary sculptures. "Elements of Form," for example, features a wrought iron armature like those used in barred windows, balanced on a four-foot-high limestone cone. A stone sphere on top of the armature is flanked by a smaller cylinder, cone, cube, and pyramid at the corners. The overall effect is geometric and symmetrical, but with a feeling of airiness to the shapes and their relationship to each other.

"I like fitting things together," says Heers.

That's an understatement. In his smaller works, ornamental bronze hinges from ancient sea chests are used as the wings of angels; gears turn into the

legs of a seated dancer. The feet of a beautiful Carolina wren are made from late-1800s buggy springs. A car mirror Heers found in his driveway became a golden halo for a stone saint.

In his studio, Heers points to the curved neck of a long garden spade. "Doesn't that remind you of the curved neck of Nefertiti?" he asks.

His studio is crammed with massive equipment: an air compressor, sand blaster, forge, several drill presses and anvils, cutters, grinders and polishers for working with stone. Everywhere you look are the raw materials of his trade—stones of every size, shape, texture and color; metal fencing, rods, tools, machine parts; antique farm equipment.

On one wall is the beginning of an 8 x 30-foot hanging sculpture, a commission for Mott Children's Hospital at the University of Michigan. Heers takes woven metal fencing, removes some of the crossbars, drills holes in the ends of stones, and fastens them to either end of the crosspieces. The long lines of stone and metal resemble a giant chain necklace with hanging strands of beads.

On a nearby table stands an unfinished three-foot stone sculpture of a female figure. The artist has been experimenting with various sizes of arms and hands, fashioned from the spikes of an iron drag used to plow land. He heats and hammers the metal flat, then cuts beautifully shaped fingers. How can an object so prosaic become something so delicate and feminine?

One of his best selling series was a three-foot wall sculpture, an irregular iron grid with some of the squares filled in with stone. The quartz, limestone, granite and formica squares are sliced so thin (to 1/32 of an inch) they're transparent!

Born in Minnesota, Heers still carts stone back to Michigan from the Heers family farm in Owatonna, MN. He earned his B.B. and M.Ed. degrees from the University of Minnesota and has studied at the Minneapolis College of Art. He also attended the School of Vision in Salzburg, Austria, studying painting with Oskar

Kokoschka. The University of Michigan recruited him as an art education professor in 1961. Heers set up a stone and metals and jewelry program at UM, and also served as associate dean and interim dean of the Art School. In 1986-87, he was a guest professor of art at Kunst Akademie, Karlsruhe, Germany. Now retired from teaching, he works full-time as a design consultant and artist.

Heers's work has been exhibited primarily in Midwestern museums and galleries, at the Walker Art Center, Minneapolis Institute of Art and Slusser Gallery at UM's School of Art & Design. He has done commissions for Providence Hospital in Novi, MI and Deaconess/Waltham Hospital in Waltham, MS. One-man shows have been held at Forsythe Gallery in Ann Arbor and Degraaf Galleries in Chicago and Saugatuck, MI. His sculptures are in collections throughout the U.S. and Europe.

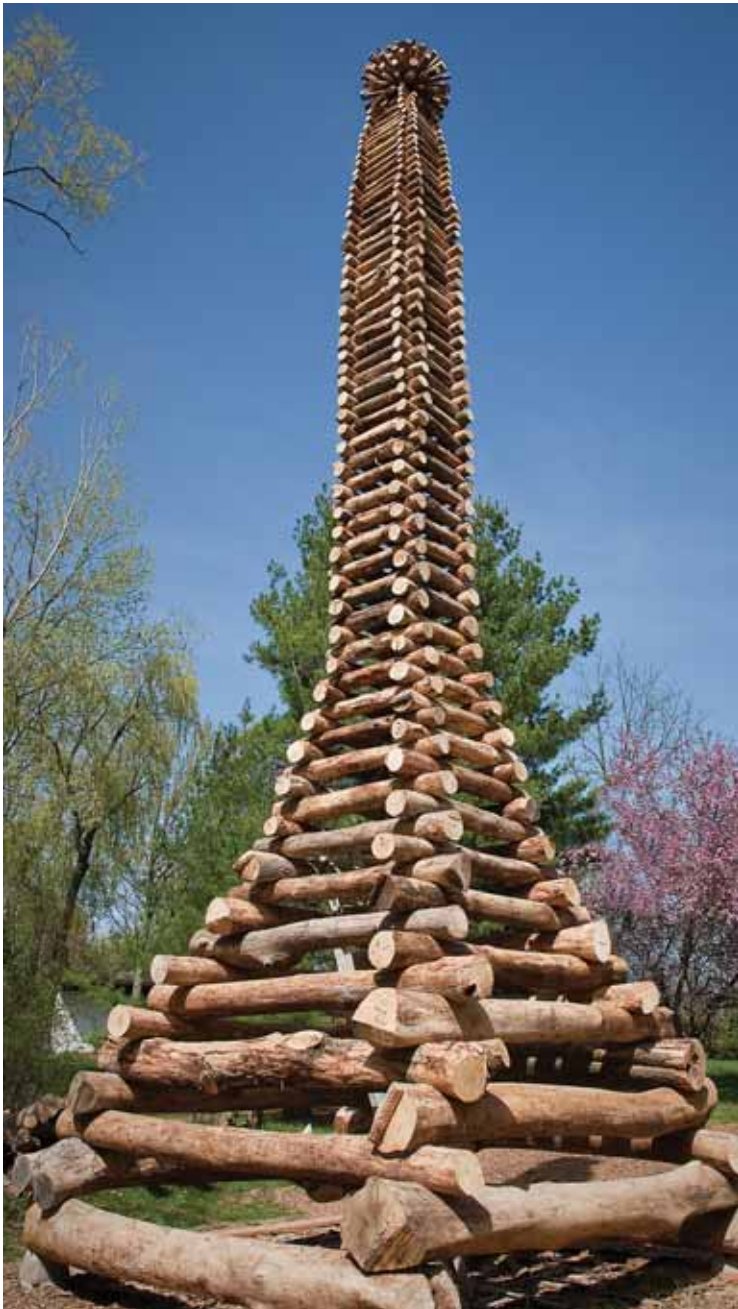
Site and Surround is the pinnacle of Wendel's career," says Patti Schwarz, co-owner of the River Gallery in Chelsea, which represents Heers and coordinated the exhibit. She points out how the largest sculpture in the show, the 40-foot *Green Ash Tower* was a collaborative effort.

The tower resembles the Eiffel Tower in shape, made from trees on Heers's property that were killed by the ash tree borer. Up close you can see that the markings on the logs, stripped of their bark, look like cave scribbles from a mysterious indigenous people. Heers explains these are the winding tunnels made by the borer larvae as they destroy the tree.

Heers worked with Scott Lankton, an artist blacksmith, Tom Rayer, a landscape architect, and assorted relatives, friends, and neighbors to build the tower in 10-foot-high sections, lifted into place by crane. For the foundation, concrete was poured four feet into the ground. The logs were cut to a uniform length and placed in a log cabin-like configuration. Logs were fastened together using a combination of notches and iron pegs hammered into drilled holes. Because of the varying thickness and shape of the natural logs, this was a painstaking process.

"I hope whoever lives here after I'm gone likes this tower," says Heers with a glance at the striking sculpture. "It's going to be here awhile!"

Site and Surround runs May 15-June 19. On May 15, 2-5 p.m., free shuttle buses will take visitors from the parking lot at Precision Manufacturing, northwest corner of Wagner and Liberty Roads, to the opening reception. Smaller sculptural pieces and an installation are on exhibit at the River Gallery, 120 S. Main Street, Chelsea the same dates. After the opening, viewing hours for the outdoor exhibition are Saturdays (June 5, 12 and 19) and Wednesdays (May 19, 26, June 2 and 9), 1-4 p.m. Visitors may drive to the site at 3893 W. Liberty Rd. For more information, call 734-433-0826 or visit www.chelsearivergallery.com. **ASM**



Wendel Heers' 40-foot Green Ash Tower sculpture is made from made from trees on his property that were killed by the ash tree borer.

Circle of Art; Turning Art Into Food

May 16, 2010 marks the 6th Circle of Art benefit for Food Gatherers. The Circle of Art is a party, a project and a group effort by artists and art lovers to help fight hunger where we live. Simply stated, a bunch of artist donate small works of art, Saline Picture Frame Co. mats them all and hosts a party, lots of people come to the party and bid on the art, and then Food Gatherers uses the money raised to feed hungry people.

Over the last five years hundreds of generous artists, established and emerging, have donated more than 2000 small works of art. The money raised from the sale of these little pictures, sculptures, fiber works, jewelry and more has enabled Food Gatherers to provide more than 125,000 meals to local people in need.

"The Circle of Art fundraiser is a fantastic example of the vital support Food Gatherers gets from our community in our fight against hunger. This is the sixth year that the Saline Picture Frame Company has gathered up hundreds of pieces of unique local art for auction, with funds going to support our mission," said Eileen Spring, President and CEO of Food Gatherers.

"The generous and creative spirit of organizers Peter, Mary and Sara Bowe and the artists who donate the works of art, have generated more than \$70,000 in the last 5 years—enough to feed 2,000 children for a month! Paul Cézanne once said: 'The day is coming when a single carrot, freshly observed, will set off a revolution!' The Bowe's have made a local revolution in turning art into food."

For more info visit our website at www.circle-of-art.net or Food Gathers at www.foodgatherers.org.

TWO TWELVE ARTS CENTER

Summer Highlights for Children

- June 12, 9-4 Carnival of Art Family Fun Day
- June, July, August-Wind, Earth, Water Camp

May Exhibit

Jane Darling- Painting The Landscape In Pastel And Watercolor
Artist's Reception - Friday, May 14, 7-9 PM

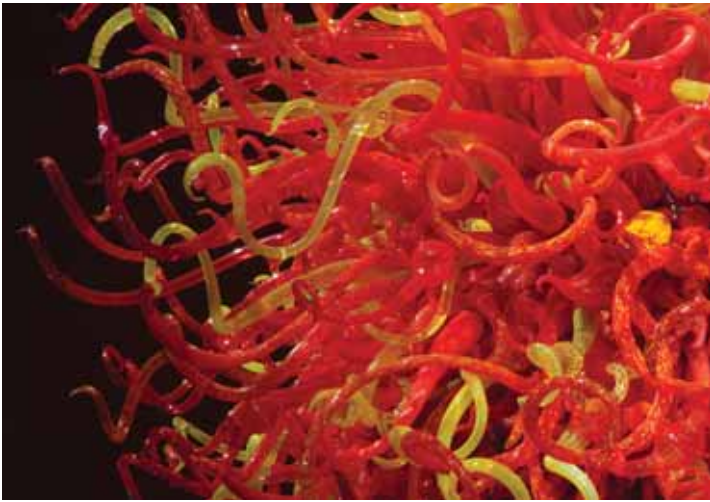
June Exhibit

Rob Kinsey - Rust
Artist's Reception - Friday, June 11, 7-9 PM

See other classes and events on our web site

212 W. Michigan Ave., Saline, MI 48176
734-944-ARTS • www.twotwelvearts.org
Center Hours: Monday-Friday 9am-3pm • 212 is a non profit arts center





Breathtaking Chihuly Exhibition at Meijer Gardens

Few American artists can capture the attention of millions the way Dale Chihuly can, and Frederik Meijer Gardens & Sculpture Park, one of the nation's most significant sculpture and botanic experiences, will celebrate the masterwork of Chihuly with a breathtaking and exclusive outdoor sculpture exhibition, April 30 - September 30, 2010.

Chihuly at Frederik Meijer Gardens & Sculpture Park: A New Eden will include thousands of pieces of glass in 15 different settings across the 132-acre grounds. Each site-specific sculpture will harmonize with the surrounding natural environment, and bright, bold horticulture designs will change with the seasons.

"This exhibition celebrates one of the world's foremost glass artist and his much-anticipated return to Meijer Gardens," said Joseph Becherer, chief curator and vice president. "Specifically created for this exhibition, Chihuly's sculptural glass infuses his expression of nature with the stunning landscape of our grounds."

For additional information, please visit www.meijergardens.org.

Purple Rose Theatre Announces Summer Comedy

The Purple Rose Theatre Company announced its summer comedy will be *Boeing-Boeing* by Marc Camoletti, adapted by Beverley Cross. The production will enjoy an eleven-week engagement from Thursday, June 17 through Saturday, August 28, 2010. Seven low-price previews of *Boeing-Boeing* will be performed from Thursday, June 17, through Thursday, June 24. Regular performances for the duration of the engagement are Wednesdays through Saturdays at 8:00 pm with Saturday matinees at 3:00 pm and Sunday matinees at 2:00 pm. All performances will be held at The Purple Rose Theatre Company, 137 Park Street, Chelsea. For more information, call (734) 433-ROSE or visit www.purplerosetheatre.org.

Mr. B Takes Boogie-Woogie Piano On Cross-state Bike Ride for Children's Causes



Mark Braun, better known as the Boogie Woogie piano player, Mr. B, who entertains crowds every year at the Ann Arbor Art Fairs is taking his show on the road—literally. This July, along with a few bandmates, Braun plans to peddle his 352-pound acoustic piano via a custom-made bicycle 300 miles across the roadways of Michigan, playing shows along the way to raise money for children's health and wellness. He's calling this traveling show on wheels the Joybox Express.

"The Joybox Express is a vehicle for positive change in people's lives," says Braun. "Our goal is to raise awareness of issues relating to the health and well being of children. We are especially concerned with the challenge of providing opportunities for children to participate in the arts and in athletics. These two disciplines are crucial to the wellness of body and spirit in children, and are essential elements in successful societies as a whole. By demonstrating elements of both athleticism and music making, we hope to inspire people to make donations to groups representing children's interests in these fields who are in need of funding."

For more information, visit www.mrbsjoyboxexpress.com. If you'd like to help support his efforts, contact him at markbraun7@sbcglobal.net, or 734-604-3935.

WineFest 2010, May 8, 7pm

WineFest 2010, the Ann Arbor Art Center's annual fundraising extravaganza will be held on Saturday, May 8 at 7:00 pm. This year's event will take place at the University of Michigan's North Campus Research Complex (formerly Pfizer).

The creative black-tie optional event will include an international wine tasting, a gourmet strolling supper, and first-class silent and live auctions. The Honorary Chair of the event is Laurence Feraud, Owner/Winemaker, Domaine du Pegau. In conjunction with WineFest, Feraud will also host a WineMaker Dinner on Thursday, May 6, 2010, at 6:30 pm at Mediterraneo Restaurant in Ann Arbor.

General tickets for WineFest are \$100. Patron level tickets are \$200 and include a private reception with Laurence Feraud, starting at 6:00 pm, reserved seating, a special tasting glass, and an advanced preview of the auction items with a "buy it now" option. The cost of the WineMaker Dinner is \$150. For more information please visit www.annarborartcenter.org.

Weber's Inn Unveils \$500K Ballroom Makeover



Weber's Restaurant and Hotel, a fixture in Ann Arbor for more than 70 years, recently completed a dramatic renovation of its event space at a cost of \$500,000.

Brighter colors and more contemporary accoutrements now replace traditional decor in its 4,500-square-foot ballroom.

"Our repeat clientele that have been hosting meetings for years at Weber's comment that the Main Ballroom appears like an entirely new meeting facility," says Doug Chapin, director of sales. "They say the new banquet space

feels bigger and looks brighter."

Located in the heart of Ann Arbor, Weber's Restaurant and Hotel specializes in conventions and businesses conferences. The property has 158 guestrooms, a four-seasons recreation area, complimentary Wi-Fi and 9,300 square feet of high-tech event space among other amenities. Visit www.webersinn.com for more information.

Eight Professional Theatres Announce Michigan Equity Theatre Alliance (META)

Detroit Repertory Theatre (Detroit), The Jewish Ensemble Theatre (West Bloomfield), Performance Network Theatre (Ann Arbor), Plowshares Theatre Company (Detroit), The Purple Rose Theatre Company (Chelsea), Meadow Brook Theatre (Rochester) Tipping Point Theatre (Northville) and Williamston Theatre (Williamston) have announced the formation of the Michigan Equity Theatre Alliance (META).

META will be a permanent alliance that will foster collaboration at all levels of operations, from marketing and audience development to collective bargaining to sharing inventory. META will strengthen and promote the image of Michigan's Equity theaters, while finding ways to grow stronger through collaboration. META will pursue projects in each of four strategic areas identified as critical for success. These are: marketing, branding and audience development; group vendor and contract negotiation; research, best practices and advocacy; space and facilities sharing/organizational efficiency.

For more information, please email carla@peformancenetwork.org.

People Dancing Presents A Gala Dance Concert



On Friday, May 21, performance group *People Dancing* will present a Movement Artists' Guild Gala Concert at Campbell Center for the Arts, Greenhills School, on Greenhills Drive in Ann Arbor.

This is an exciting concert featuring the choreography of Company Members and the performances of Movement Artists Guild Dancers. All Guild and Company artists are residents of the area, although the majority of the Company have professional experience from across the state and nation.

Curtain is at 8:00 PM. Ticket Information is as follows: Advance and Concession (Vets, Students with ID, Seniors 65+), \$12; Tickets at the Door, \$16; Children 10 and under, \$8.

After-glow reception to follow, by donation. Advance Tickets available at: Arts in Motion Dance and Music Studio, 2841 Boardwalk, Ann Arbor, and at www.peopledancing.org.



UMMA Appoints New Director

As of July 1, Joseph Rosa, the Art Institute of Chicago's chief curator of architecture and design, will become the new director of the University of Michigan Museum of Art.

"We are so pleased that Joe Rosa has agreed to lead the University of Michigan Museum of Art," said U-M President Mary Sue Coleman.

Rosa has curated more than 30 exhibitions on contemporary architecture and design and is the author of 14 books. His writings have appeared in *Praxis*, *Architectural Design*, *Assemblage*, *Casabella*, *The History of Photography Journal*, *Oculus*, *Architektur & Bauforum*, and *Progressive Architecture*. He is also a noted scholar on the architect Albert Frey--the first disciple of Le Corbusier to build in America--and Julius Shulman, the highly acclaimed 20th-century architectural photographer.

"I am thrilled and honored to be given this wonderful opportunity to lead the University of Michigan Museum of Art into the future at this very special time in its history," said Rosa, who is the John H. Bryan Curatorial Chair of Architecture and Design at the Art Institute of Chicago.

For more on UMMA, visit: www.umma.umich.edu.

Go to www.ArtShowcaseMagazine.com for a digital version of our *Calendar of Events*.

VISUAL ART

U-M MUSEUM OF ART (UMMA)

Thru June 6

ART, ANTI-ART, NON-ART:

Experimentations in the Public Sphere in Postwar Japan, 1950-1970

Highlights a dynamic phase of avant-garde art in postwar Japan characterized by self-reflection and multimedia experimentation.

Thru July 18

UMMA PROJECTS: Oliver van den Berg

Berlin-based sculptor Oliver van den Berg produces objects based on such technical equipment as flight recorders, planetarium projectors, and-most recently-enormous banks of microphones or television cameras.

Thru July 25

WRAPPED IN SILK AND GOLD:

A Family Legacy of 20th-Century Japanese Kimono

Wrapped in Silk and Gold presents for the first time the Museum's recently acquired collection of deluxe kimono, haori, obi, and other traditional Japanese women's garments dating from the 1930s through the end of the 20th century.

May 15-August 22

TURNING POINT:

Japanese Studio Ceramics in the

Mid-20th Century

A priceless selection of ceramics dating from the 1930s through 1970s by leading figures and "living national treasures." The collection of approximately 50 works offers a focused look at the Japanese studio pottery movement at a moment of exceptional creativity and lasting influence.

Admission to the UMMA is free. \$5 suggested donation is appreciated. 525 S. State St., Ann Arbor 734.764.0395. www.umma.umich.edu.

May 7

FIRST FRIDAYS

DOWNTOWN ANN ARBOR

Participating galleries include WSG (Washington Street Gallery), Clay Gallery, and 16 Hands. Info: www.wsg-art.com.

May 8-June 12

WATER, WATER EVERYWHERE

Reception: Sat., May 8, 6-8 pm

A juried exhibit of artwork in all media featuring artist's interpretations of water's presence in the landscape and life of Michigan. River Gallery, Chelsea, 734.433.0826, www.chelsearivergallery.com.

May 8

BEAR TRACK STUDIOS OPEN HOUSE

Award-winning nature/wildlife artists Lori Taylor, Lisa Ramlow and Marie Rust will have their newest works on display at their

studio/gallery, along with works by several other nature-themed artists. Chat with the artists, walk the trails, bird-watch and save 10% on your purchase. Sat. 10-6pm. 7477 Farley Rd, Pinckney, 734.223.8612, www.beartrackstudiosllc.com.

May 16

CIRCLE OF ART

Circle of Art is a party, a project and a group effort by artists and art lovers to help fight hunger where we live. Simply stated, a bunch of artist donate small works of art, Saline Picture Frame Co. mats them all and hosts a party, lots of people come to the party and bid on the art and then Food Gatherers uses the money raised to feed hungry people. Sun. 12-5pm, Saline Picture Frame Company, 7641 N. Ann Arbor Rd., Saline. 734.429.3352. www.circle-of-art.net.

May 20

A TASTE OF ART AND LIFE

Tour a local home designed by Frank Lloyd Wright, watch area artists create their craft, and enjoy great food from top regional restaurants at the Arts Council of Greater Lansing's 4th Annual "A Taste of Art and Life" on Thurs., May 20 from 5-8pm. 517.372.4636, www.lansingarts.org.

Thru May 23

BRIGHTON ART GUILD

Reception: Fri., May 14, 6-8pm

The Brighton Art Guild proudly announces a new group of artists for their monthly series of exhibits at the CoBACH Center in downtown Brighton. During April and May, the artists exhibiting will be Sue Balk, Hank Cornille, Jeremy Eden and Leah Kucharek. Brighton Art Guild, 810.225.8197, brightonartguild.com.

May 24 - 28

SONGS OF THE BIRDS

Reception: Wed., May 26, 4-7pm

MA Thesis Exhibition by Carol Hanna. Free and open to the public. Ford Gallery, Ford Hall at EMU. 734-487-0465, or gtom@emich.edu.

May 27-July 24

WOODWARD AVENUE

Highly esteemed and critically acclaimed Belgian artist Jef Geys will present a new body of work specifically based on Detroit entitled Woodward Avenue. MOCAD, 4454 Woodward Avenue in Detroit, 313.832.6622, www.mocadetroit.org.

May 27-July 26

TOO MUCH OF A GOOD THING

Detroit-based artist Mitch Cope and architect Gina Reichert develop the installation, called The Neighborhood Machine. The exhibition will consist of sculptures, documents, drawings, video and photographs. MOCAD, 4454 Woodward Avenue in Detroit, 313.832.6622, www.mocadetroit.org.

Thru May 29

JAMIE VALEN

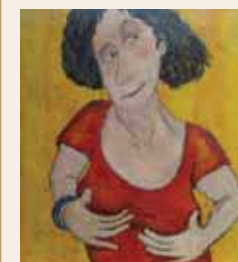
Photography by Valen, pen & ink drawings and jewelry by local artists. Artistica Gallery, 3203 Broad St., Dexter, 734.426.1500, www.artisticgallery.net.

Thru May 29

WRITING ON THE WALL

Reception: Fri., May 7, 7-9 pm

A Two Man Show by Royce Disbrow and His Alter Ego Rinoceronte Agqbar Proclajo. Clay Gallery, 35 S. Main Street, Ann Arbor, 734.662.7927, www.claygallery.org.



Thru May 31

BALANCE: AN ARTIST'S COLLABORATIVE GAME

Reception: Fri., May 7, 6-8pm

Thirty-eight women artists have been paired to create three original works

each, based on the theme of *Balance*. Through "Call and Response" exchanges, the process of collaboration has been recorded through images and insights. U of M Duderstadt Center Gallery, 734.424.0206, christykel@hotmail.com.



Thru June 9

ART AT THE LIBRARY

Reception: Sun., May 16, 2-4pm

Fiber Art by Jill Ault and Watercolor Paintings by LeAnne Sowa at the Brighton District Library as part of the Art at the Library 2010 Series. Free to the public. 810.225.1665, www.brightonartguild.com.

Thru June 12

PAINTINGS AND CONSTRUCTIONS

Recent works by Matthew Breneau. The works for this show reside somewhere between sculpture/construction and non-representational painting. Paint Creek Center for the Arts, Rochester, 248.651.4110, www.pccart.org.

Thru June 13

THE PRINT EXHIBITION

Reception: Fri., May 14, 6-8pm

Free Printmaking Demo: May 16, 12:30-2pm

An annual juried exhibition that celebrates the

depth and variety of work created by Michigan artists working in the print medium. From traditional forms to contemporary interpretations, The Print presents a wide range of focused, unique points of view. Ann Arbor Art Center, 734.994.8004, www.annarborartcenter.org.



Thru June 13
IMAGING THE FUTURE

Reception: Fri., May 7, 6-9pm

A multimedia exhibit in which 26 artists, architects, engineers, scientists, and fashion designers attempt to visualize what life in the future will be like. Gallery Project, 734.997.7012, thegalleryproject.com.

Thru June 14
CIAO, ITALY: ART QUILTS
Michigan Quilt Artists Invitational

The 12th annual exhibit of the Michigan Quilt Artists Invitational exploring the past and present influences of Italy. Gifts of Art Gallery-Taubman Health Center South Lobby, Floor 1, 1500 E. Medical Center Dr., Ann Arbor.

Thru June 15
OPEN BOOK

Curated by two EMU graphic design professors, Leslie Atzman and Ryan Molloy, the show includes work by several major national and international artists. University Art Gallery, 210 EMU Student Center, 900 Oakwood Ave. Ypsilanti, 734.487.0465, www.emich.edu/fordgallery.

June 19 - July 31
INNER WORLDS AND ANIMALS

Reception, June 19, 7-11 pm

This show will feature veteran artist's Charles Aimone's "dog paintings," along with sculptures of Joan Painter Jones. Aimone's highly layered paintings reflect on the mysterious intelligence of animals. Art & Ideas Contemporary Art Gallery, 15095 Northville Rd., 734.420.0775, www.artandideasgallery.com.

Thru June 30
SALINE MILLS

Reception May 21, 7-9:30pm

Paintings and photos of Historic Saline Mills by many local artists will be displayed at My Favorite Café, 101 S. Ann Arbor St. Sponsored by Two Twelve Arts Center, 734.944.4054, www.twotwelvarts.org.

Thru July 3
ROBERT FRANK PHOTOGRAPHS, 1955

Over 60 rare and many never-before-seen black-and-white photographs taken in Detroit by legendary artist Robert Frank are the subject of this exhibition. Detroit Institute of Arts, 5200 Woodward Ave., Detroit, www.dia.org.

Thru Aug 1
GREAT LAKES PASTEL SOCIETY
Opening reception May 8

The Great Lakes Pastel Society's 2010 National Show, with representation from artists throughout the US and Canada. Saline artist, Linda Kortesoja Klenczar has two pastels in the show. Midland Center for the Arts 1801 W. Saint Andrews, Midland, 989.631.5930, www.mcfta.org.

Thru Aug 8
THROUGH AFRICAN EYES:
THE EUROPEAN IN AFRICAN
ART, 1500 TO PRESENT

This exhibition explores the artistic consequences of the variations and dynamics of cultural exchanges between Africans and Europeans over 500 years, making it the broadest analytical overview on the subject to date. Detroit Institute of Arts, 5200 Woodward Ave., Detroit, www.dia.org.



Thru September 30
CHIHULY AT FREDERIK MEIJER
GARDENS & SCULPTURE PARK:
A NEW EDEN

Celebrate the masterwork of Chihuly with a breathtaking and exclusive outdoor sculpture exhibition. This exhibit will include thousands of pieces of glass in 15 different settings across the 132-acre grounds. Frederik Meijer Gardens & Sculpture Park, 888-957-1580, www.meijergardens.org.

Thru Spring 2011
ART TRAIL TECUMSEH

Explore this free outdoor sculpture exhibit at your own pace in historic downtown Tecumseh. 517.424.6003, www.downtowntecumseh.com.

THEATER & DANCE

May 6-9
THE LARAMIE PROJECT

By Moises Kauffman and the Tectonic Theatre Project. Directed by Kat Walsh. Both an award-winning play and an HBO film, The Laramie Project is one of the most important-and moving-theatrical works in the last several decades. Thurs-Sat. 8pm, Sun. 2pm. Arthur Miller Theater, 1226 Murfin Ave., UM North Campus, Ann Arbor. www.a2ct.org.

May 9
THE HABIT OF ART

UMS and the Michigan Theater present a high-definition broadcast of the National Theatre of London's "NT Live's" latest production. Sun. 7:30pm. The Habit of Art contains adult content and is not suitable for children under 15 years. Tickets and information available at 734.764.2538, www.ums.org.

May 13-16
THE SECRET GARDEN

Adapted from the beloved book by Frances Hodgson Burnett. Produced by A2ct Jr. Thurs-Fri, 7pm, Sat-Sun, 1 & 4pm. Performed in University of Michigan's Matthaei Botanical Gardens, 1800 N Dixboro Rd., Ann Arbor. Junior Theatre shows may only be purchased by calling or visiting the A2CT office or at the door. www.a2ct.org.

May 14-16
THE TAMING OF THE SHREW

Performed by the Ann Arbor Young Actors Guild. Lydia Mendelssohn Theatre, 911 N. University Ave., Ann Arbor, 734.913.9800, www.aayag.org.



May 15
LaRON WILLIAMS

Performance Network Theatre presents acclaimed storyteller, LaRon Williams, on Saturday, May 15 at 1pm. This all-ages show, part of the Children's Theatre Network's Saturday Series for Young Audiences, will be followed by a milk and cookies reception. 734-663-0681, www.performancenetwork.org.

[more>>>](#)

May 19

ODISSI with Shreelina Ghosh

A performance of Odissi, the two-thousand year old classical dance of India. Shreelina will begin with an introduction to the history of the dance and also discuss technical aspects before she begins her performance. Wed. 7-8:30 p.m. Free. Multi-Purpose Room, Ann Arbor District Library, Main Branch, 343 S. Fifth Ave. Ann Arbor. 734-327-4200, www.aadl.org.

May 21

PEOPLE DANCING'S 25th ANNIVERSARY

Gala concert featuring dancers from Movement Artists' Guild performing company choreography. Fri. 8pm, reception to follow. Greenhills School, 850 Greenhills Dr., Ann Arbor. Advance tickets at www.peopledancing.org.



**Thru May 29
OUR TOWN**

Winner of the Pulitzer Prize in 1938, this icon of American dramatic history spans thirteen years in the town of Grover's Corners, a quintessential small community with characters reflecting the hopes and dreams, the failures and successes, of people everywhere. Special half-price student matinee performances are scheduled for Tuesday, May 11 and Tuesday, May 18 at 11am. Purple Rose Theatre Company, 734.433.7673, www.purplerosetheatre.org.

June 3-20

CLUB MOROCCO

An Original Swing Musical by Jon Huffman and Barbara F. Cullen with musical arrangements by Ashton Wolf. The heat at the core of the evening's entertainment is provided by Zoot-suited bandleader Chick Valentine and his onstage band, The Swing Street All-Stars. The Encore Musical Theatre Company, 3126 Broad Street, Dexter, 734.268.6200, www.theencoretheatre.org.



**June 10-July 18
THE SEAFARER**

The Seafarer follows four Irish mates on an all-night bender of drinking and poker. Whiskey bottles empty, words fly and their game turns a dark corner when a mysterious stranger wants a piece of the action. 734.663.0681, www.performancenetwork.org.

**June 17 -Aug 28
BOEING-BOEING**

A French farce by Marc Camoletti, adapted by Beverley Cross. Parisian lothario Bernard juggles three fiancées, each beautiful airline hostesses with frequent layovers in Paris. Bernard's carefully constructed timetable runs like clockwork until unexpected schedule changes bring all three to his apartment at the same time, and his "ideal life" unravels all in one nonstop night. Boeing-Boeing originally premiered in Paris in 1960. Directed by Nathan Mitchell. The Purple Rose Theatre, 137 Park St., Chelsea; 734.433.7673, www.purplerosetheatre.org.

MUSIC

**May 7, May 21 & June 4
BLUE LANTERN ON MAIN
FOLK SERIES**

All shows will begin at 8pm. \$10 cover will be paid at the door on an 'as available' general seating entry. Series tickets for all three performances are available for \$25 and on sale at the Co-BACH. 810.229.4758, Livplayers.org.

**May 11 & 12
COLIN HAY**

From the Australian rock band Men at Work, playing all the old hits including the catchy "Down Under" as well as new releases. 8pm. The Ark, 316 S. Main St. Ann Arbor, 734.761.1451, www.theark.org.

May 12

GOO GOO DOLLS

7:30pm. Tickets available through Ticketmaster.com or 800-745-3000. Michigan Theater, 603 E. Liberty, Ann Arbor, www.michtheater.org.

May 13

CHOIR MUSIC

Father Gabriel Richard H.S. Madrigals

Madrigals is an audition-only choir from Ann Arbor's Father Gabriel Richard High School. Singing both a cappella and with accompaniment, the Madrigals display a wide range of musical styles from baroque to contemporary. Thursday, May 13, 2010, 12:10 pm. University Hospital Main Lobby, Floor 1.

May 13-June 13

HOME VOICES FROM FAMILIES OF THE MIDWEST

World Premiere of the final installment of the groundbreaking *Voices from the Midwest* series. Using the voices of both young and old, this production explores the concept of family and its many definitions. Williamston Theater, 517.655.7469, www.williamstontheatre.org.

May 14-15

REDEFINING DIVA

Sistrum's annual Spring Concert. "Redefining Diva" and Silent Auction. Auction starts at 7pm and the concert at 8pm. Dart Auditorium at Lansing Community College www.sistrum.org.

May 16

SUMMER HOLIDAYS

With the Ann Arbor Concert Band. Featured soloist Jordan Lulloff. Sun., 2pm. Michigan Theater, 603 E. Liberty, Ann Arbor, 734.434.7876, www.aaband.org.

May 19

QUARTEX

Wednesday, May 19, 9pm. Admission is \$5 at the door. The series features Quartex- Danny Fisher-Lochhead on sax; Matt Endahl, piano; Andrew Kratzat, bass; and Aaron Gold on drums. Originally founded by Steve Rush, Quartex plays an array of styles, from Ornette Coleman to traditional spirituals. UMMA, 734.764.0395, www.umma.umich.edu.

May 29

**YPSILANTI SYMPHONY
POPS CONCERT**

An outdoor concert featuring film favorites. Adults \$10. Seniors 65 & over \$5. Family (family of 4 or more) \$25. Students with ID & children 12 & under \$5. WCC students free with ID. Riverside Park, www.ypsilantisymphony.org.

June 17

PATY GRIFFIN

Part of Ann Arbor Summer Festival. 8pm. Power Center, 121 Fletcher St., Ann Arbor, 734.994.5999, www.annarborsummerfestival.org.

**June 17
BACK TO DETROIT**

Jazz with acclaimed Kirk Lightsey on piano and legendary Marcus Belgrave on trumpet. Thurs. 8pm. Kerrytown Concert House, 415 North 4th Avenue, Ann Arbor, 734.769.2999, www.kerrytownconcerthouse.com.

**June 19
COME TOGETHER: A BEATLES
CELEBRATION**

The Ann Arbor Summer Festival presents a special tribute concert featuring some of the area's most talented musicians performing their favorite songs by the legendary Liverpool band. Curated by Martin Bandyke. 8pm. Power Center, 121 Fletcher Street, Ann Arbor, 734.994.5999, www.annarborsummerfestival.org.

**June 24
YOSHI**

In the world of hip-hop, Yoshi is utterly unique: a versatile rapper, poet, and songwriter who explores the musical roots of his Pacific Islander and African American heritage. 6:30pm. Free - Suggested donation per visit of \$3/person or \$5/family. Part of Ann Arbor Summer Festival. Performance location is 915 E. Washington St., Ann Arbor, www.annarborsummerfestival.org.

**June 26
ANDREWS SISTERS**

Celebrate America's most popular female singing group, the Andrews Sisters, with local favorites Elizabeth Major, Wendy Bloom and Monica Swartout-Bebow in a cabaret-style show. You'll hear favorites such as "Boogie Woogie Bugle Boy," "Hold Tight," and "Apple Blossom Time," as well as other popular songs from the 1940s. 8pm. Kerrytown Concert House, 415 N. 4th Ave., Ann Arbor, 734.769.2999, kerrytownconcerthouse.com.

**June 26
BERNADETTE PETERS**

An unforgettable evening of songs from the best of Broadway's stage including popular standards, Rodgers and Hammerstein, Stephen Sondheim, and many more. Part of the Ann Arbor Summer Festival. 8pm. Power Center, 121 Fletcher Street, Ann Arbor, 734.994.5999, annarborsummerfestival.org.

OTHER EVENTS

**May 7-9
ANNUAL SPRING PLANT SALE**

A fundraiser to benefit the programs, classes, initiatives, gardens, and natural areas at the Arb and Gardens. Expert advice and gardening tips from area master gardeners, Arb and Gardens' staff, and volunteers. Free. U-M Matthaei Botanical Gardens 1800 N. Dixboro Rd., Ann Arbor. 734.647.7600, www.mbgna.umich.edu.

**May 7-13
THE ART OF THE STEAL**

In 1922, Dr. Albert C. Barnes formed a remarkable educational institution around his priceless collection of art, located just five miles outside of Philadelphia. Now, more than 50 years after Barnes's death, the collection is at the heart of a controversial power struggle between those who intend to bring it to a new museum in Philadelphia and those who point to Barnes's will stating that the paintings may never be removed. Michigan Theater, 734.668.TIME, michtheater.org.

**May 9
THE ART OF CHINESE CALLIGRAPHY**
He BingWu will provide guidance on what to look for and how to best appreciate the fine and nuanced art of Chinese calligraphy. Saturday, May 9, 4pm at the Helmut Stern Auditorium and Forum. UMMA, 734.764.0395, www.umma.umich.edu.

**May 15-16
PROMENADE TECUMSEH**
Tour 5 historical homes and 2 signature buildings in Tecumseh. Other activities include historic downtown walking tours, antique bicycles, used book sale, flower sale, lost arts and much more! Sat & Sun, 11am - 6pm. Chamber of Commerce 517.423.3740, www.promenadetecumseh@gmail.com, www.downtowntecumseh.com.

**BOOK & PAPER ARTS
WORKSHOPS AT HOLLANDERS**

May 15 & 16: Sixth Century Codex C Binding with Julia Miller. Sat & Sun, 10-5pm. Class Fee: \$275

June 5 & 12: Paper Vessels with Karen O'Neal. Sat. 1-4pm, Sun 1-3pm, Class Fee: \$82.

June 19 & 20: Flax Case Book with Cover Appliqués and Embroidery with Jean Buescher Bartlett. Sat & Sun 10-5pm. Class Fee: \$215.

June 21, 22 & 23: The OOHPS Walk Book with Ben Reynaert and Karen O'Neal. Mon, Tues & Wed, 5:30-8:30. Class Fee: \$125.

More information is available at www.hollanders.com or 734.741.7531.

**May 16
KIMONO FASHION SHOW**

For modern approaches to the art of traditional dress, join us for a Kimono fashion show that will present elegant kimono and obi created for various occasions and ages. Sunday, May 16, 2 pm at the Helmut Stern Auditorium. UMMA, 734.764.0395, www.umma.umich.edu.

**May 22
BUTTERFLY FESTIVAL**
U-M Exhibit Museum of Natural History, 1109 Geddes Ave., Ann Arbor, 734.764.0480.

**May 22
CERAMICS DEMONSTRATION
with Shigaraki potter Kôyama Kiyoko**
A leading female potter from the renowned historic kiln town of Shigaraki, Kôyama Kiyoko will demonstrate her clay throwing and building techniques that combine old traditions with innovative approaches. Kôyama recently donated 9 pieces to the Museum, and her work is featured in the Turning Point exhibition. Saturday, May 22, 2 pm in the Multipurpose Room. UMMA, 734.764.0395, www.umma.umich.edu.

**May 23
DAYS OF FIRE**
Film screening and interview with Kôyama Kiyoko. Sunday, May 23, 2 pm. Kôyama Kiyoko's (b. 1936) life and career is an eloquent story that is also fully representative of what female potters struggled for and achieved in the field of ceramic art. Helmut Stern Auditorium. UMMA, 734.764.0395, www.umma.umich.edu.

**May 27-July 26
MOTHER MAY I**
LaToya Ruby Frazier presents four films and a selection of photographs that document three generations of women in her family. MOCAD, 4454 Woodward Avenue in Detroit, 313 832 6622, www.mocadetroit.org.

**June 19
UNDER THE BIG TOP & BEYOND**
An evening of entertainment showcasing a theatrical imagining of circus life through rhythm, dance, and merriment. Featuring Tree of Life Students, Tree of Life Drum and Dance Society, and Nomadic Jewels Tribal Bellydance with special guests aerial artist Micha of the Detroit Flyhouse and bellydancer extraordinaire Melissa Benjamin. Sat. 6pm WSEC Auditorium, 500 Washington Street, Chelsea. 734.433.0697, www.treeoflifestudio.org.

**June 19-Sept 30
FABULOUS FLAMINGOS
A Whimsical Outdoor Garden Display**
The flamingos have landed-at Matthaei! We'll have dozens of pink flamingos-fancifully decorated by U-M Art School students, community members, and Ann Arbor public school students-installed in a creative homage to a great American camp symbol. U-M Matthaei Botanical Gardens, 1800 N. Dixboro Road, Ann Arbor, 734.647.7600, www.mbgna.umich.edu.

MAKE IT WEBER'S ...tonight!



- Famous full-service restaurant and hotel independently operated by the Weber family
- Weber's Restaurant, famous for Prime Rib, lobster, seafood and steak
- Wine Spectator Award of Excellence
- Exciting nightlife and live entertainment at the Ventura Wine Bar and Habitat Ultralounge
- Free parking
- 4-Star hotel rated by Orbitz & Travelocity
- Featured property – "Resorts and Great Hotels Magazine"
- Beautiful Four Seasons Pool and Recreation Area
- Specialty poolside Jacuzzi® Suites
- Complimentary high-speed Internet access in all rooms and public areas
- Northwest Airlines World Perks mileage program
- Distinguished event facilities for groups of up to 500

Weber's

RESTAURANT & HOTEL

ANN ARBOR, MICHIGAN

Dinner Reservations 734-665-3636

★★★★ | Orbitz | Travelocity
ANN ARBOR'S HIGHEST RATED HOTEL

734-769-2500 ■ 800-443-3050 ■ www.webersinn.com
3050 Jackson Road ■ Ann Arbor, MI ■ I-94 at exit 172